

**DESCRIPTION**

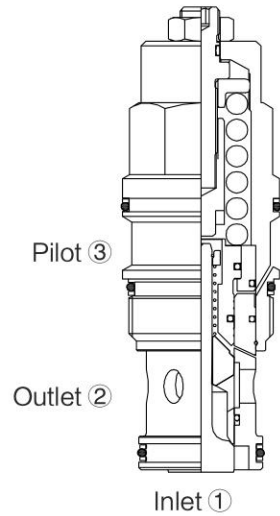
Fixed-setting, 3-port Counter Balance Valves with pilot assist function similarly to the adjustable versions except the fixed setting is pre-set to a nominal value.

**OPERATION**

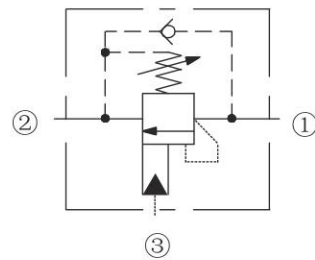
The check valve allows free flow from the directional valve (port ②) to the load (port ①) while a direct-acting, pilot-assisted relief valve controls flow from port ① to port ②.

**FEATURES**

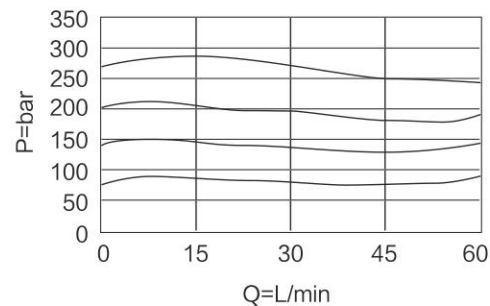
- Counter Balance Valves should be set at least 1.3 times the maximum load induced pressure.
- Back pressure at port ② adds to the effective relief setting at a ratio of ① plus the pilot ratio times the back pressure.
- Reseat exceeds 85% of set pressure when valve is standard set. Settings lower than the standard pressure may result in lower reseal percentage.



**ISO SYMBOL**



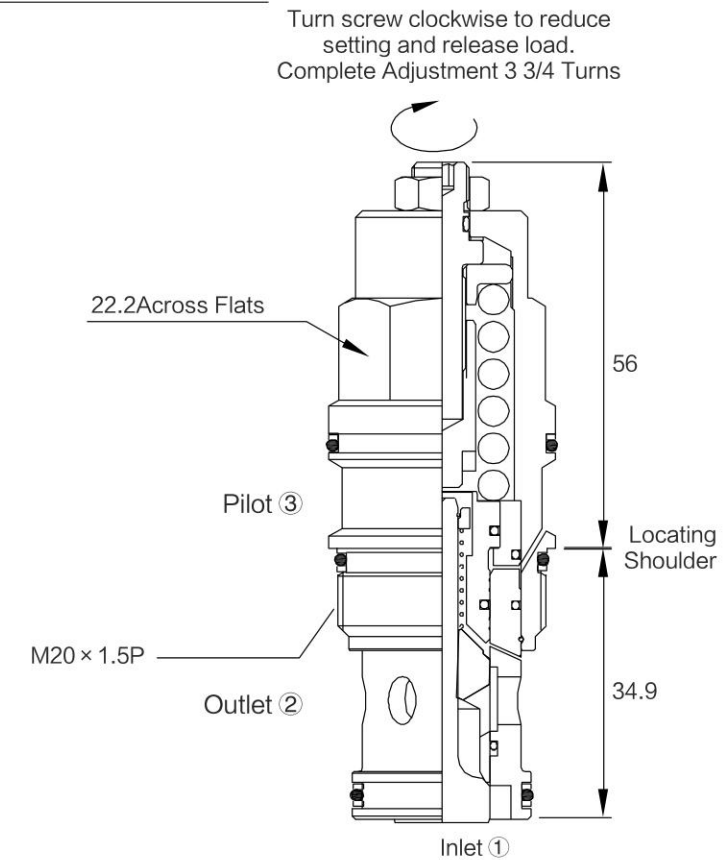
**PERFORMANCE (Cartridge Only)**



**RATINGS**

- Maximum setting = 280 bar. 280bar Maximum recommended load pressure at maximum setting = 215 bar
- Flow Rating:** See Performance Chart
- Internal Leakage:** 0.4ml/min max. to 85% of nominal setting.
- Setting Pressure Defined:** bar (psi) evident at 7.6 lpm (2.0 gpm) attained
- Pilot Ratio:** 3: 1
- Temperature:** -40°C to 120°C, with standard Buna seals;
- Fluids:** Mineral-based or synthetics with lubricating properties at viscosities of 7.4 to 420 cSt (50 to 2000 sus)
- Cavity:** T08-3B, See bottom of this catalog.
- Standard Ported Body:** Steel rated at 420 bar ( 6090 ) .

**DIMENSIONS**



**TO ORDER**

