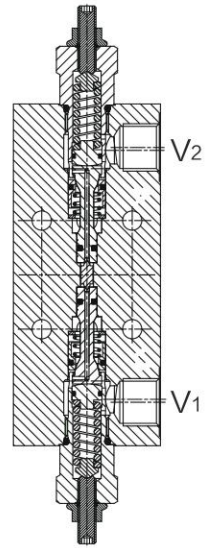


IN08.44.11XYZ Daul Counterbalance



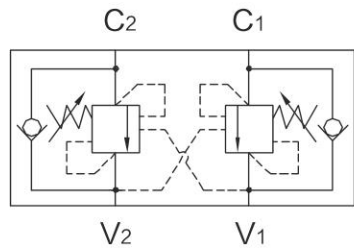
DESCRIPTION

Valve block structure, Plate installation . This valve module includes 2 sections,each one composed by a check and a relief valve with balanced piston

OPERATION

It provides static and dynamic control of load by regulating the flow IN and OUT of the actuator, through ports C1 and C2. This valve module includes 2 sections, each one composed by a check and a relief valve with balanced piston,pilot assisted by pressure in the opposite line: the check section allows free flow into the actuator, then holds the load against reverse movement; with pilot pressure applied at the line across, the pressure setting of the relief is reduced in proportion to the stated ratio until opening and allowing controlled reverse flow. Relief operates at the valve setting independent of back-pressure, but the piloted opening remains subject to additive pressure at V1 or V2.

ISO SYMBOL



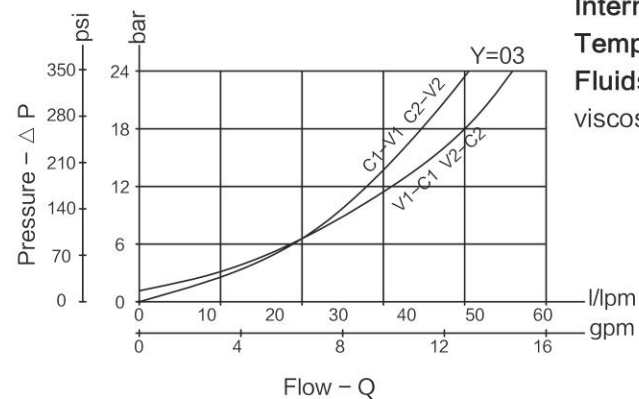
FEATURES

- Dual Counterbalance
- Pipe installation

RATINGS

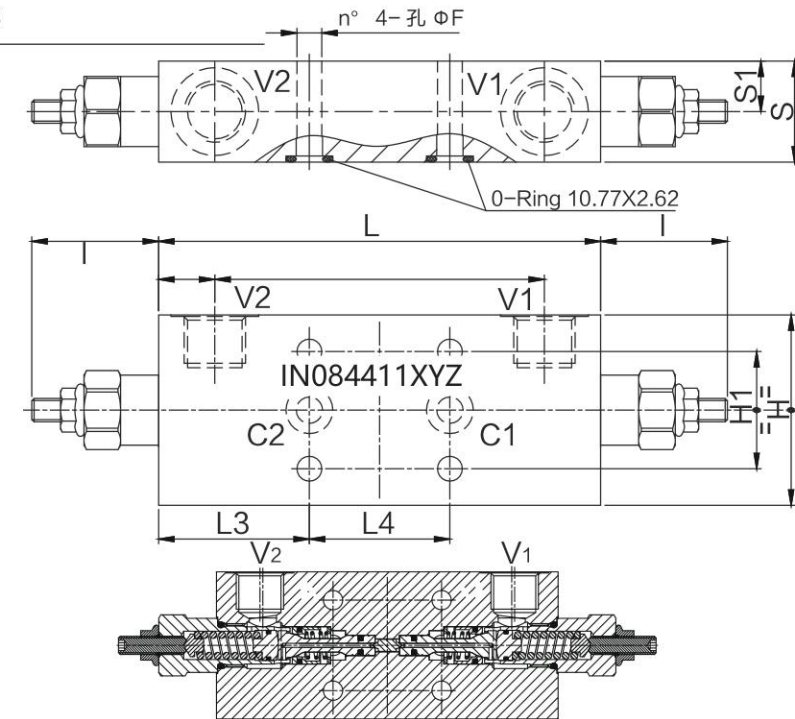
Max. Operating Pressure: 350bar.
 Maximum setting = 350 bar.350bar Maximum recommended load pressure at maximum setting = 270bar
Relief setting: at least 1.3 times the highest expected load.
Pilot ratio: 4.2 : 1
Flow: see performance chart
Internal Leakage: 15drops/min max. to 80% of nominal setting.
Temperature: -40 to 120° C with standard Buna seals
Fluids: Mineral-based or synthetics with lubricating properties at viscosities of 7.4 to 420 cSt (50 to 2000 sus);

PERFORMANCE (Cartridge Only)



IN08.44.11XYZ

DIMENSIONS



17.5 (0.69)	34.5 (1.36)	48 (1.89)	51.5 (2.03)	112.6 (4.43)	19.2 (0.76)	151 (5.95)	45.5 (1.79)	40 (1.58)	65 (2.56)	:	8.5 (0.34)	:	G1/2	2.30 (5.1)
15 (0.59)	29.5 (1.16)	45 (1.89)	51.5 (2.03)	109.6 (4.32)	20.7 (0.82)	151 (5.95)	45.5 (1.79)	38 (1.58)	55 (2.17)	:	8.5 (0.34)	:	G3/8	1.76 (3.9)
S1	S	L4	L3	L2	L1	L	I	H1	H	:	F	:	Y	Weight kg (lbs)

TO ORDER

