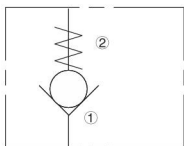
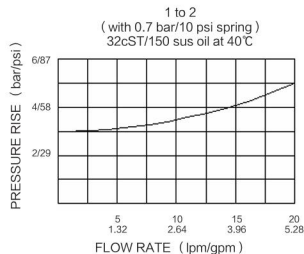


ISO SYMBOL



PERFORMANCE (Cartridge Only)



DESCRIPTION

A screw-in, cartridge-style, hydraulic check valve for use as a blocking or load-holding device.

OPERATION

The INCV08-B20 allows flow passage from 1 to 2, while normally blocking oil flow in the opposite direction. The cartridge has a fully guided check which is spring-biased closed until sufficient pressure is applied at 1 to open to 2

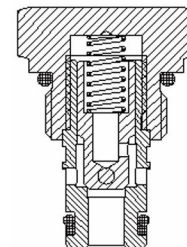
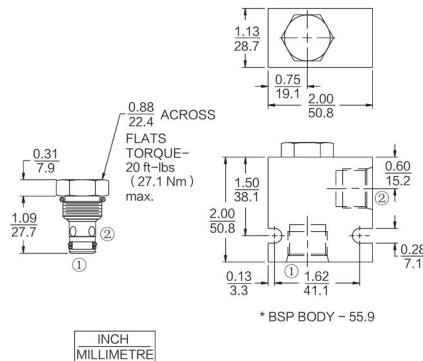
FEATURES

- Hardened seat for long life and low leakage.
- Optional bias springs for back-pressure application flexibility.
- Fully guided check assembly.
- Compact size.
- Fast closing and seating.

RATINGS

- Operating Pressure:** 240 bar (3500 psi)
- Proof Pressure:** 350 bar (5075 psi)
- Flow:** See Performance Chart
- Internal Leakage:** 0.10 cc/minute (2 drops/minute) max. at 240 bar (3500 psi)
- Crack Pressure Defined:** Gauge psi evident at 1 at 16.4 cc/minute (1 cu. in./minute) attained
- Standard Bias Springs at Crack:** 0.3 bar (4 psi); 0.7 bar (10 psi); 1.7 bar (25 psi); 4.1 bar (60 psi)
- Temperature:** -40 to 120° C
- Fluids:** Mineral-based or synthetics with lubricating properties at viscosities of 7.4 to 420 cSt (50 to 2000 sus)
- Installation:** No restrictions
- Cavity:** T08-2E; See bottom of this catalog.

DIMENSIONS



MATERIALS

- Cartridge:** Weight: 0.08 kg. (0.17 lbs.) Steel with hardened work surfaces. Zinc-plated exposed surfaces. Buna N O-rings and back-up standard.
- Standard Ported Body:** Weight: 0.16 kg. (0.35 lbs.) Anodized highstrength 6061 T6 aluminum alloy, rated to 207 bar (3000 psi). Ductile iron bodies available; dimensions may differ.

TO ORDER

INCV08-B20

Porting		Bias Spring	
Cartridge Only	0	4	0.3 bar (4 psi)
SAE 4	4T	10	0.7 bar (10 psi)
SAE 6	6T	30	2.1 bar (30 psi)
1/4 in. BSP**	2B	42	3.0 bar (42 psi)
3/8 in. BSP**	3B	60	4.1 bar (60 psi)
1/2 in. BSP**	4B	100	6.9 bar (100psi)

\*\*BSP Body; U.K. Mfr. Only

Seals	
N	Buna N (Std.)
V	Fluorocarbon