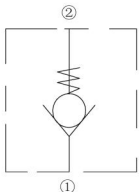
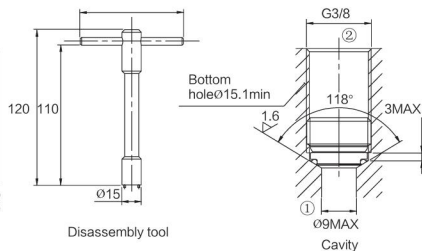
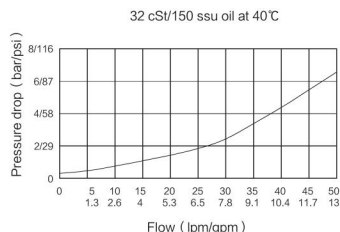


TORQUE: 6Nm max

ISO SYMBOL



PERFORMANCE (Cartridge Only)



DESCRIPTION

A screw-in, direct acting, ball type in-line check valve. Main use as a blocking or load-holding device.

OPERATION

INCV2000-G38 Allows flow passage from ① to ②, while normally blocking oil flow in the opposite direction.

The cartridge has a fully guided check which is spring-biased closed until sufficient pressure is applied at ① to open to ②.

FEATURES

- Hardened seat for long life and low leakage.
- Compact size.
- Fast closing and seating.

RATINGS

**Max Pressure:** 350bar (5000psi)

**Flow:** See Performance Chart

**Internal Leakage:**

0.15 ml/minute (3 drops/minute) max. at 350 bar (5000 psi)

**Crack Pressure Defined:**

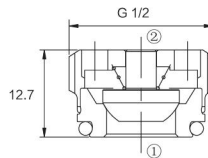
Gauge psi evident at 1 at 16.4 cc/minute (1 cu. in./minute) attained

**Standard Bias Springs at Crack:** < 0.5 bar ;

**Temperature:** -40°C ~ 120 °C ( with Buna N seals).

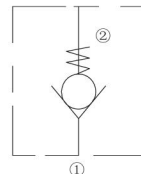
**Fluids:** Mineral-based or synthetics with lubricating properties at viscosities of 7.4 to 420 cSt (50 to 2000 ssu);

**Standard Ported Body:** Anodized highstrength 6061 T6 aluminum alloy, rated to 240 bar (3500psi). Steel rated at 420 bar ( 6090 ) .

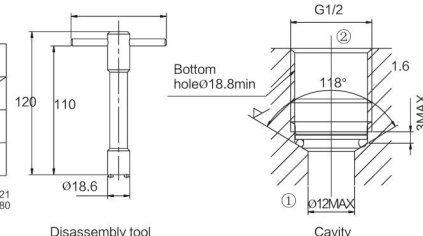
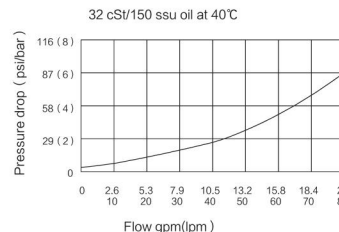


TORQUE: 10Nm max

ISO SYMBOL



PERFORMANCE (Cartridge Only)



DESCRIPTION

A screw-in, direct acting, ball type in-line check valve. Main use as a blocking or load-holding device.

OPERATION

INCV2000-G12 Allows flow passage from ① to ②, while normally blocking oil flow in the opposite direction.

The cartridge has a fully guided check which is spring-biased closed until sufficient pressure is applied at ① to open to ②.

FEATURES

- Hardened seat for long life.
- low leakage.
- Compact size.

RATINGS

**Max Pressure:** 350bar (5000psi)

**Flow:** See Performance Chart

**Internal Leakage:**

0.15 ml/minute (3 drops/minute) max. at 350 bar (5000 psi)

**Crack Pressure Defined:**

Gauge psi evident at 1 at 16.4 cc/minute (1 cu. in./minute) attained

**Standard Bias Springs at Crack:** < 0.5 bar ;

**Temperature:** -30°C ~ 120 °C ( with Buna N seals ) .

**Fluids:** Mineral-based or synthetics with lubricating properties at viscosities of 7.4 to 420 cSt (50 to 2000 ssu);

**Standard Ported Body:** Anodized highstrength 6061 T6 aluminum alloy, rated to 240 bar (3500psi). Steel rated at 420 bar ( 6090 ) .