

Maximum stroke:1.1mm TORQUE: 5Nm max

DESCRIPTION

A screw-in, direct acting,ball type in-line check valve. Main use as a blocking or load-holding device.

OPERATION

INCV2500-G18 allows flow passage from ① to ②, while normally blocking oil flow in the opposite direction. The cartridge has a fully guided check which is spring-biased closed until sufficient pressure is applied at ① to open to ②.

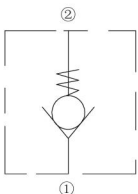
FEATURES

- Hardened seat for long life .
- low leakage.
- Compact size.

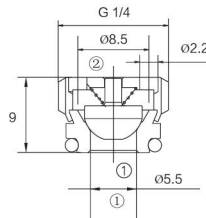
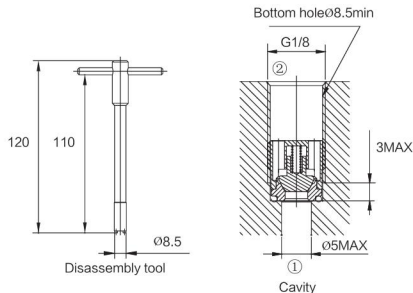
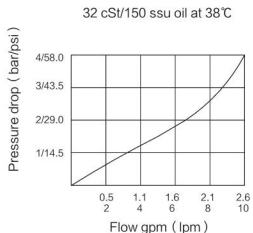
RATINGS

Max Pressure: 350bar (5000psi)
Flow:See Performance Chart
Internal Leakage:
 0.15 ml/minute (3 drops/minute) max. at 350 bar (5000 psi)
Standard Bias Springs at Crack:
 1bar (14psi) (MDX06-02A);0.3bar(4psi) (MDX06-02A-X).
Temperature:-30°C ~ 120 °C (with Buna N seals)
Fluids:Mineral-based or synthetics with lubricating properties at viscosities of 7.4 to 420 cSt (50 to 2000 ssu);
Standard Ported Body: Anodized highstrength 6061 T6 aluminum alloy, rated to 240 bar (3500psi).Steel rated at 420 bar (6090psi) .

ISO SYMBOL



PERFORMANCE (Cartridge Only)



Maximum stroke:1.8mm TORQUE: 6Nm max

DESCRIPTION

A screw-in, direct acting,ball type in-line check valve. Main use as a blocking or load-holding device.

OPERATION

INCV2000-G14 Allows flow passage from ① to ②, while normally blocking oil flow in the opposite direction. The cartridge has a fully guided check which is spring-biased closed until sufficient pressure is applied at ① to open to ②.

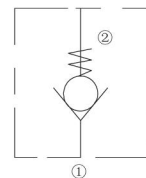
FEATURES

- Hardened seat for long life .
- low leakage.
- Fast closing and seating.

RATINGS

Max Pressure: 350bar (5000psi)
Flow:See Performance Chart
Internal Leakage:
 0.15 ml/minute (3 drops/minute) max. at 350 bar (5000 psi)
Crack Pressure Defined:
 Gauge psi evident at 1 at 16.4 cc/minute (1 cu. in./minute) attained
Standard Bias Springs at Crack: < 0.5 bar ;
Temperature:-40°C ~ 120 °C (with Buna N seals) .
Fluids:Mineral-based or synthetics with lubricating properties at viscosities of 7.4 to 420 cSt (50 to 2000 ssu);
Standard Ported Body: Anodized highstrength 6061 T6 aluminum alloy,rated to 240 bar (3500psi).Steel rated at 420 bar (6090psi) .

ISO SYMBOL



PERFORMANCE (Cartridge Only)

