

DESCRIPTION

A screw-in, direct acting, ball type in-line check valve. Main use as a blocking or load-holding device.

OPERATION

INCVR2000-G14 allows flow passage from ② to ①, while normally blocking oil flow in the opposite direction. The cartridge has a fully guided check which is spring-biased closed until sufficient pressure is applied at ② to open to ①.

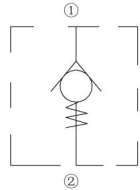
FEATURES

- Hardened seat for long life and low leakage.
- Compact size.
- Fast closing and seating.

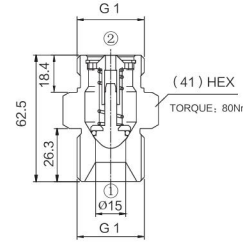
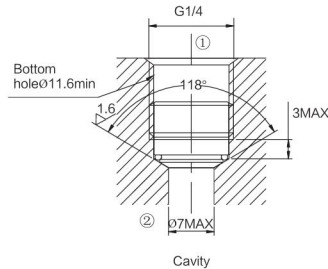
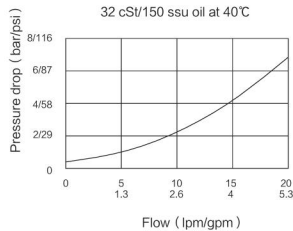
RATINGS

Max Pressure: 350bar (5000psi)
Flow: See Performance Chart
Internal Leakage: 0.15 ml/minute (3 drops/minute) max. at 350 bar (5000 psi)
Crack Pressure Defined: Gauge psi evident at 1 at 16.4 cc/minute (1 cu. in./minute) attained
Standard Bias Springs at Crack: < 0.5 bar ;
Temperature: -40°C ~ 120 °C (with Buna N seals).
Fluids: Mineral-based or synthetics with lubricating properties at viscosities of 7.4 to 420 cSt (50 to 2000 ssu);
Standard Ported Body: Anodized highstrength 6061 T6 aluminum alloy, rated to 240 bar (3500psi). Steel rated at 420 bar (6090).

ISO SYMBOL



PERFORMANCE (Cartridge Only)



DESCRIPTION

A screw-in, direct acting, ball type in-line check valve. Main use as a blocking or load-holding device.

OPERATION

INCV12-G1, Allows flow passage from ① to ②, while normally blocking oil flow in the opposite direction. The cartridge has a fully guided check which is spring-biased closed until sufficient pressure is applied at ① to open to ②.

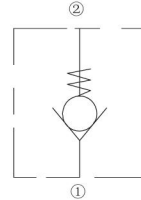
FEATURES

- Hardened seat for long life.
- low leakage.
- Compact size.

RATINGS

Max Pressure: 350bar (5000psi)
Flow: See Performance Chart
Internal Leakage: 0drops/min
Crack Pressure: 0.4 bar ;
Temperature: -30°C ~ 120 °C (with Buna N seals).
Fluids: Mineral-based or synthetics with lubricating properties at viscosities of 7.4 to 420 cSt (50 to 2000 ssu);
Standard Ported Body: Anodized highstrength 6061 T6 aluminum alloy, rated to 240 bar (3500psi). Steel rated at 350 bar.

ISO SYMBOL



PERFORMANCE (Cartridge Only)

