

DESCRIPTION

A load-shuttling, screw-in, cartridge-style hydraulic check valve, for use in blocking circuits where a priority of flow/direction is given to a higher pressure circuit over a lower one.

OPERATION

The INLS04-B30 will allow flow from the higher pressure of 1 or 3 port to the 2 port. The valve is commonly used to direct oil from the pressure side of a bidirectional hydraulic motor to a pressure-released hydraulic brake. It can also be used as a load-sense signaling valve.

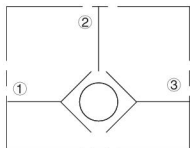
FEATURES

- Rapid response to load direction changes.
- Miniature size.

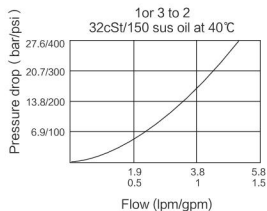
RATINGS

Operating Pressure: 240 bar (3500 psi)
Flow: See Performance Chart
Internal Leakage: 0.25 cc/minute (5 drops/minute) max. at 207 bar(3000 psi)
Temperature: -40 to 120° C with standard Buna seals
Fluids: Mineral-based or synthetics with lubricating properties at viscosities of 7.4 to 420 cSt (50 to 2000 sus);
Cavity: ; T04-2D, See bottom of this catalog.

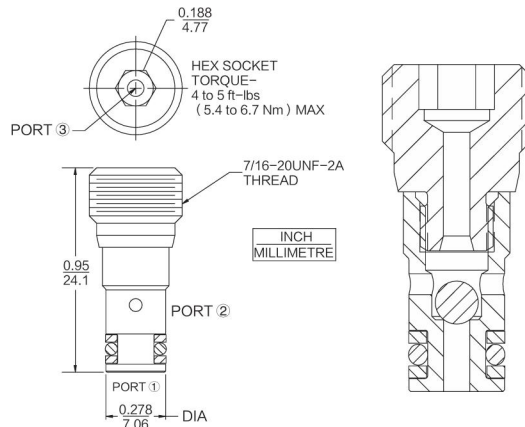
ISO SYMBOL



PERFORMANCE (Cartridge Only)



DIMENSIONS



MATERIALS

Cartridge Weight: 0.08 kg. (0.17 lbs.)
 Steel with Zinc-plated exposed surfaces; Buna N O-rings and back-ups standard.

TO ORDER

