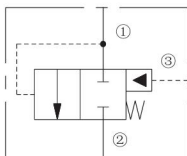
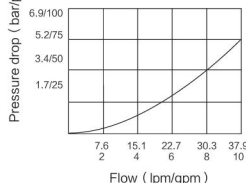


ISO SYMBOL



PERFORMANCE (Cartridge Only)

① to ② or ② to ① (Fully Open)
32 cSt/150 ssu oil at 40°C



DESCRIPTION

A spool-type, screw-in, cartridge-style, hydraulic directional element, with multifunction potential when used with other directional, pressure, or flow control devices.

OPERATION

The INEP08-35 is a spring-biased blocking valve which will shift to allow full flow from ① to ② only when pressure at ① exceeds the cumulative pressure of ③, plus the bias spring pressure value. INEP08-35 is a pilot-to-close directional valve. With no pressure at ③, flow will be allowed from ① to ② once the bias spring force is overcome with pressure at ①.

FEATURES

- Multiple function/application potential.
- Low pressure drop.
- Industry common cavity.
- Compact size.

RATINGS

Maximum Operating Pressure:

345 bar (5000 psi) with steel or ductile housing;

207 bar (3000 psi) with aluminum housing

Flow: See Performance Chart

Internal Leakage:

115 ml per minute (7 cu. in. per minute) at 345 bar (5000 psi)

Bias Spring:

0.7 bar (10 psi)

2.8 bar (40 psi)

5.5 bar (80 psi)

7.6 bar (110 psi)

10.3 bar (150 psi)

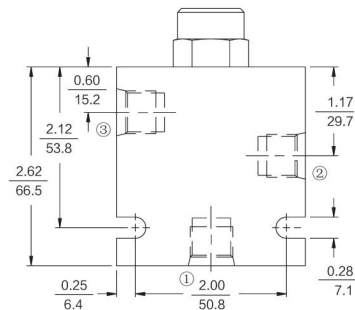
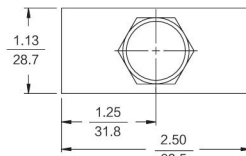
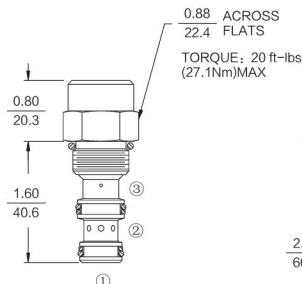
Temperature: -40°C ~ 120°C (with Buna N seals)

Fluids: Mineral-based or synthetics with lubricating properties at viscosities of 7.4 to 420 cSt (50 to 2000 ssu)

Cavity: T08-3A; See bottom of this catalog.

DIMENSIONS

INCH
MILLIMETRE



MATERIALS

Cartridge Weight:

0.11 kg (0.25 lbs);

Steel with hardened work surfaces.

Zinc-plated exposed surfaces.

Buna N O-rings and back-ups standard.

Standard Ported Body Weight:

0.64 kg (1.4 lbs);

Anodized high-strength

aluminum alloy, rated to

207 bar (3000 psi).

rated to 345 bar (5000 psi);

Standard Ported Body Weight:

0.36 kg (0.80 lbs);

Anodized high strength

6061 T6 aluminum alloy,

rated to 240 bar (3500 psi).

Ductile iron bodies available; dimensions may differ

TO ORDER

INEP08-35

Porting

Cartridge Only	0
SAE 6 (Ductile)	6TD
SAE 6 (Steel)	6TS
SAE 6 (Alum.)	6T

Bias Spring

10	0.7 bar (10 psi)
40	2.8 bar (40 psi)
80	5.5 bar (80 psi)
110	7.6 bar (110 psi)
150	10.3 bar (150 psi)

Note: Aluminum body rated for 207 bar (3000 psi) max.

Seals

Buna N (Std.)	N
Fluorocarbon	V
Polyurethane	P