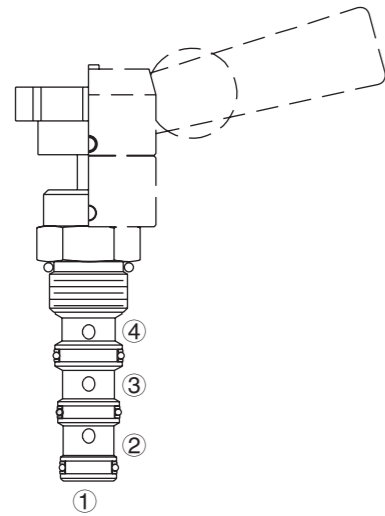


INMR10-47B Manual Rotary, 4-Way, 3-Pos., Open Center

INMR10-47B



DESCRIPTION

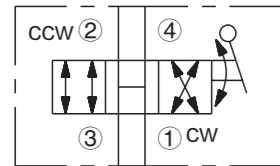
Manually-operated four-way, three-position directional valve, with adaptability to a variety of adjustment operators (ordered separately), in a variety of spool configurations.

OPERATION

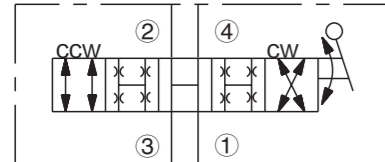
Three positions: centered, 45 ° counterclockwise, and 45 ° clockwise. In the center position all ports are open. In the 45 ° counterclockwise from center position, ports ① and ④ are open while ports ② and ③ are open. In the 45° clockwise from center position, ports ① and ② are open while ports ③ and ④ are open. All ports are partially open in transition.

ISO SYMBOL

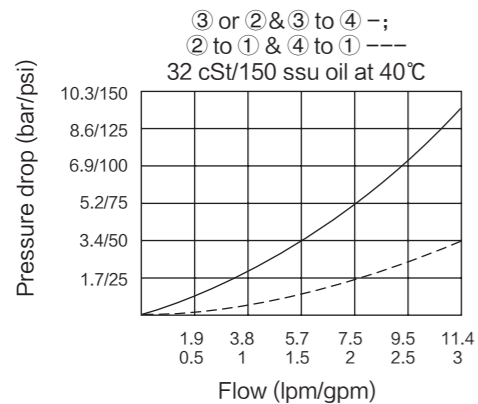
USASI/ISO:



TRANSITION:



PERFORMANCE (Cartridge Only)



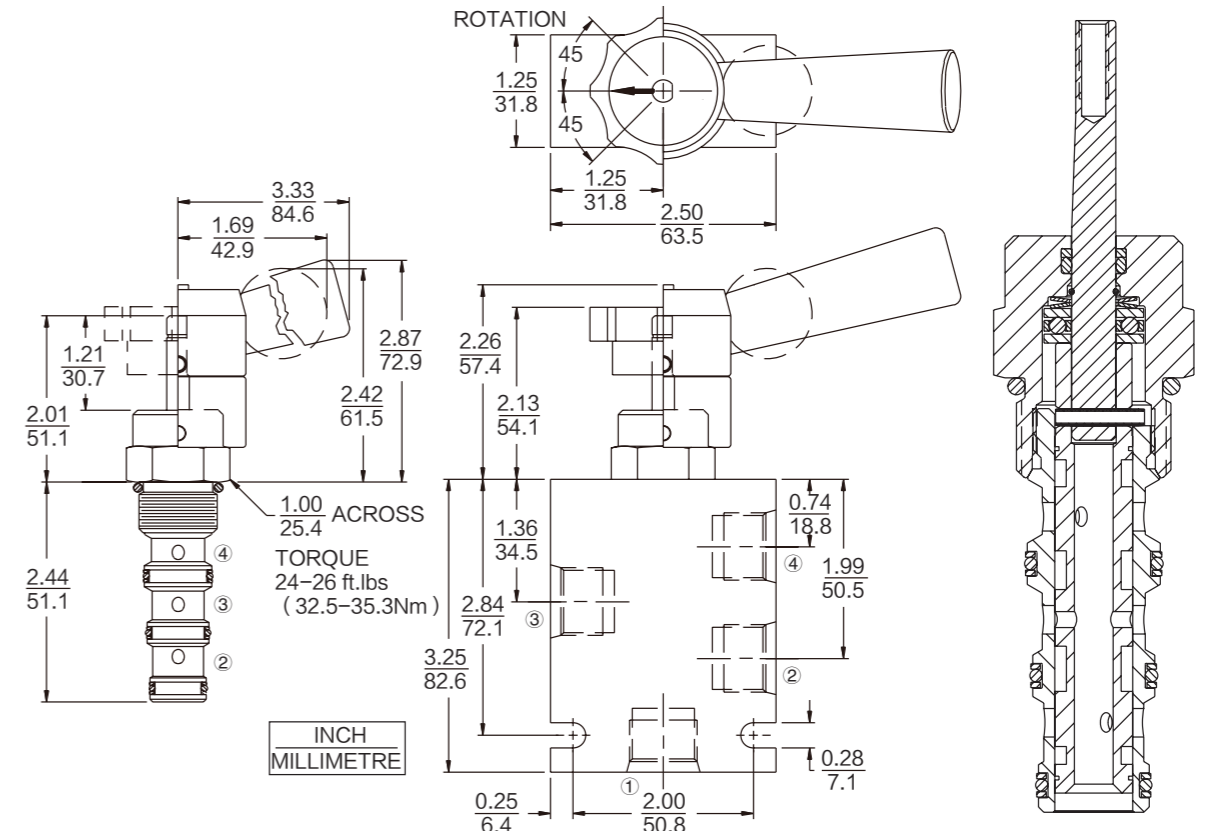
FEATURES

- Three-position detent, friction lock (with detented neutral), or spring return operators may be ordered separately.
- May be fully pressurized at all ports.
- Optional lock-down bracket.
- Heavy-duty construction.
- Industry common cavity.

RATINGS

Operating Pressure: 240 bar (3500 psi)
Max. Flow: See Performance Chart
Internal Leakage: 164 cc/minute (10 cu. in./minute) at 240 bar (3500 psi)
Temperature: -40 to 120° C with standard Buna N seals
Fluids: Mineral-based or synthetics with lubricating properties at viscosities of 7.4 to 420 cSt (50 to 2000 sus); See Temperature and Oil Viscosity, page Installation: No position restrictions; See page See page for operator handles/knobs installation; See page for lock-down bracket installation.
Cavity: T10-4A; See bottom of this catalog.

DIMENSIONS



MATERIALS

Cartridge: Weight: 0.17 kg. (0.37 lbs.)
 Steel with hardened work surfaces.
 Zinc-plated exposed surfaces.
 Buna N O-rings and Fluorocarbon back-ups standard.
Standard Ported Body: Weight: 0.34 kg. (0.75 lbs.) Anodized highstrength 6061 T6 aluminum alloy, rated to 207 bar (3000 psi). Ductile iron bodies available; dimensions may differ. See page
Lever-Type Handle: (Sold Separately)
 Weight: 0.18 kg. (0.38 lbs.) Steel with hardened work surfaces. Zinc-plated exposed surfaces. Plastic lever arm.

TO ORDER

