

DESCRIPTION

A dual pilot operated check valve for use in blocking or load-holding circuits. This valve has an optional thermal relief from port ④ to port ③.

OPERATION

The INDC10-40 will block flow from ① to ②, and from ④ to ③. Flow is allowed in the opposite direction when pressure is applied to port ② and/or port ③.

The valve has a 3:1 pilot ratio, so at least 1/3 of the load pressure at port ① or ④ is required at the pilot lines (ports ② or ③) to open the flow passage to allow flow from ports ① or ④.

The check is spring-biased at 25 psi to assure holding in a static or no load condition.

Note: Orifice disc cannot be used with this product.

FEATURES

- Hardened seat for long life and low leakage.
- Low pressure drop.
- Optional thermal relief.

RATINGS

Operating Pressure: Inlet: 240 bar (3500 psi)
Flow: Rated Inlet Flow: 30.3 lpm (8 gpm); See performance chart.
Pilot Ratio: 3:1

Check Spring Bias: 1.7 bar (25 psi)
Thermal Relief Crack Pressure Range: 310 to 386 bar (4500 to 5600 psi)

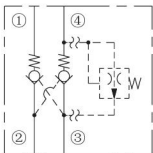
Thermal Relief Valve Leakage: 5 drops per minute (0.25 ml per minute) at up to 85% of crack pressure.

Maximum Check Valve Leakage: 5 drops per minute (0.25 ml per minute) at 240 bar (3500 psi).
Temperature: -40°C ~ 120°C (with Buna N seals)

Fluids: Mineral-based or synthetics with lubricating properties at viscosities of 7.4 to 420 cSt (50 to 2000 ssu)

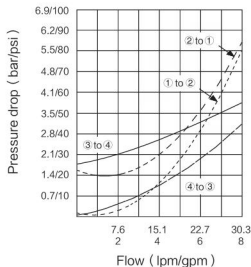
Cavity: T10-4A; See bottom of this catalog.

ISO SYMBOL

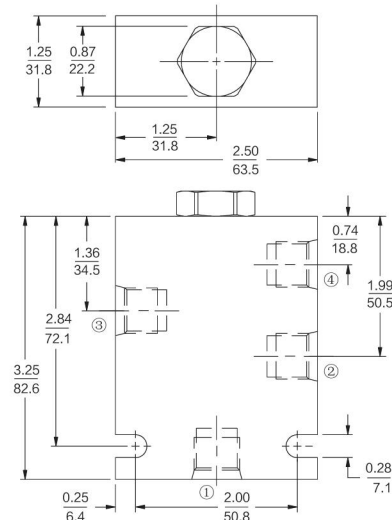
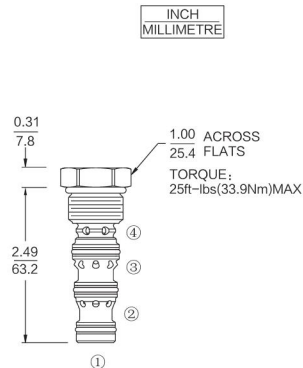


PERFORMANCE (Cartridge Only)

32 cSt/150 ssu oil at 40°C



DIMENSIONS



MATERIALS

Cartridge: Weight: 0.13 kg (0.28 lbs) ; Steel with hardened work surfaces. Zinc-plated exposed surfaces. Buna N O-rings and back-up standard.

Standard Ported Body:Weight: 0.34kg (0.40 lbs) ; Anodized highstrength 6061 T6 aluminum alloy, rated to 240 bar (3500 psi) ; Ductile iron bodies available; dimensions may differ.

TO ORDER

