

**DESCRIPTION**

A screw-in, cartridge-style, pilot-operated, spool-type, hydraulic directional valve for three-way circuits requiring remote pilot actuation.

**OPERATION**

In neutral (unpiloted), the INPD10-41 allows flow from 3 to 4. 2 is blocked. On remote pilot signal at 1, the valve shifts to open from 3 to 2, while blocking flow to 4. Since 4 is common to the spring chamber, pressure on 4 will directly (1:1) affect the pilot pressure required, and must always be added to the bias spring value.  
 Note: Consult factory for applications where bi-directional flow is required when the valve is in the normal or spring-offset position.

**FEATURES**

- Hardened spool and cage for long life.
- Industry common cavity.

**RATINGS**

**Operating Pressure:** 240 bar (3500 psi)  
**Proof Pressure:** 350 bar (5075 psi)  
**Flow:** See Performance Chart  
**Internal Leakage:** 82 cc/minute (5 cu. in./minute) max. at 207 bar (3000 psi)

**Pilot Pressure Required:**

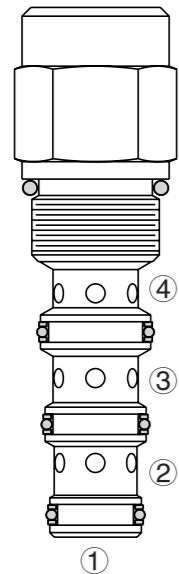
To Spool Crossover - 4.1 bar (60 psi) Spring: 4.7 bar (68.2 psi)  
 7.6 bar (110 psi) Spring: 7.6 bar (110 psi)  
 To Full Spool Shift - 4.1 bar (60 psi) Spring: 5.2 bar (75 psi)  
 7.6 bar (110 psi) Spring: 8.6 bar (125 psi)

**Oil Volume Required to Full Shift:** 0.65 cc (0.04 cu. in.)

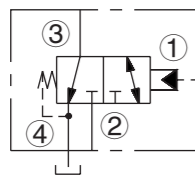
**Temperature:** -40 to 120° C with standard Buna seals

**Fluids:** Mineral-based or synthetics with lubricating properties at viscosities of 7.4 to 420 cSt (50 to 2000 sus); See Temperature and Oil Viscosity,

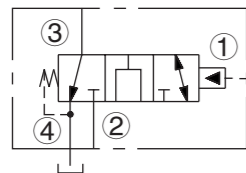
**Cavity:** T10-4A; See bottom of this catalog



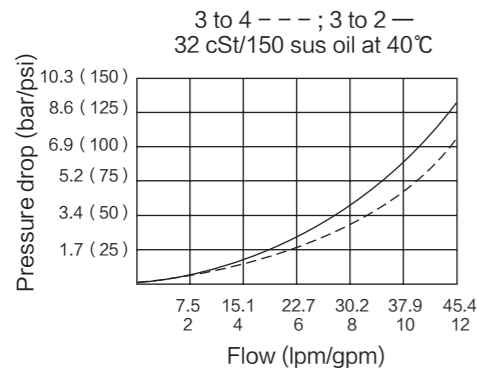
**ISO SYMBOL**



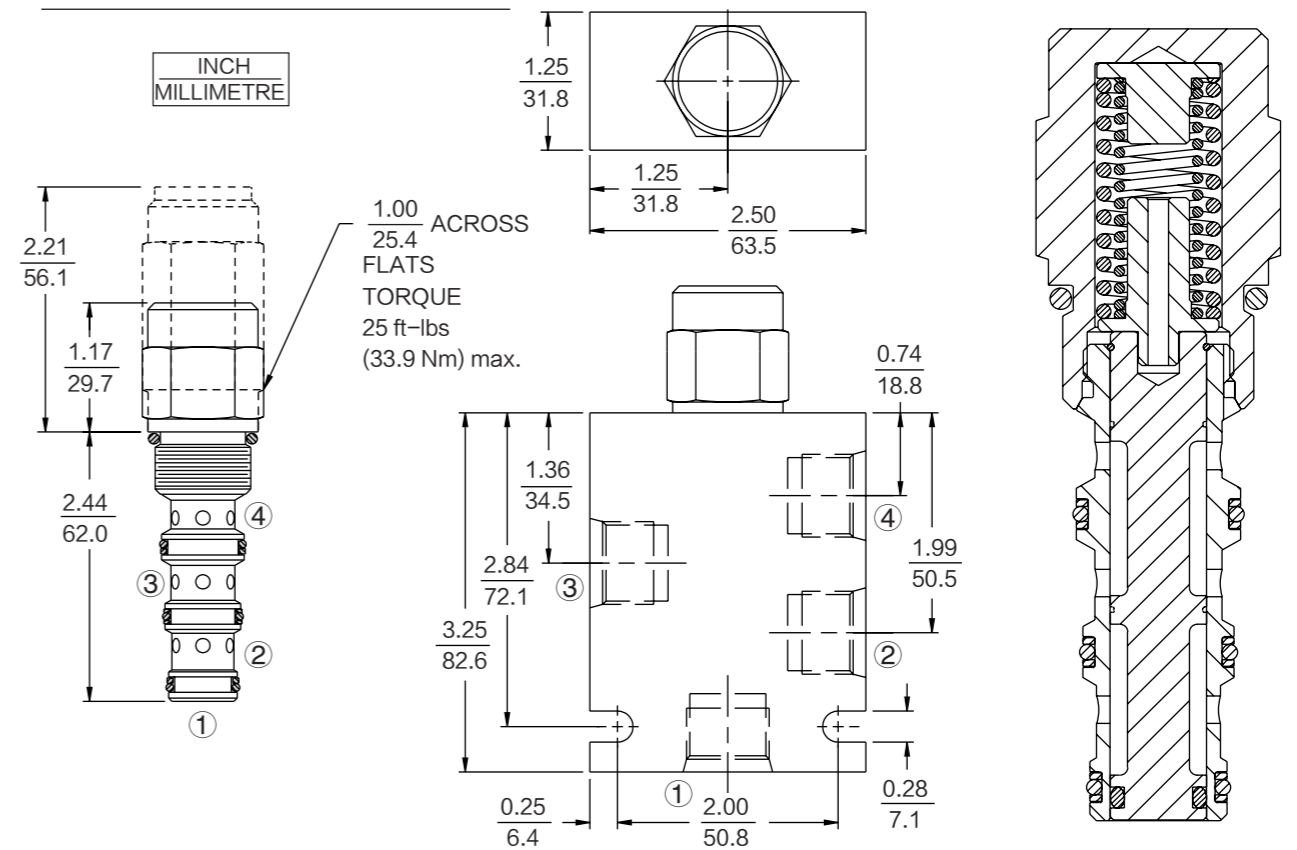
**OPEN TRANSITION:**



**PERFORMANCE (Cartridge Only)**



**DIMENSIONS**



**MATERIALS**

**Cartridge: Weight:** 0.23 kg. (0.50 lbs.)  
 Steel with hardened work surfaces.  
 Zinc-plated exposed surfaces.  
 Buna N O-rings and polyester elastomer back-up standard;  
 Anodized aluminum knobs.  
**Special Ported Body: Weight:**  
 0.16 kg. (0.35 lbs.) Anodized highstrength 6061 T6 aluminum alloy, rated to 207 bar (3000 psi).  
 Ductile iron bodies available;  
 dimensions may differ.

**TO ORDER**

