

DESCRIPTION

A screw-in, cartridge-style, pilot-operated, hydraulic check valve for use in blocking or load-holding circuits.

OPERATION

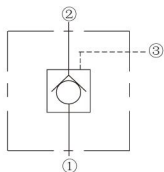
The INCKCB-XCN allows flow passage from ② to ①, while normally blocking flow from ① to ②. Flow will be allowed from ① to ② when sufficient pressure is applied at ③.

The cartridge has a 3:1 pilot ratio, meaning that at least one-third of the load pressure held at ① is required at ③ to open the valve. The check is spring-biased to assure holding in static or no-load conditions. A sealed pilot piston option is available.

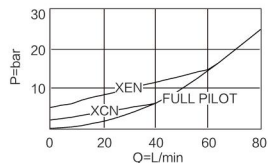
FEATURES

- Hardened seat for long life and low leakage.
- Optional sealed piston.
- Optional spring ranges.
- Compact size.

ISO SYMBOL



PERFORMANCE (Cartridge Only)



RATINGS

Operating Pressure: 350bar (5100 psi)

Flow: See Performance Chart

Internal Leakage: at 350 bar (3500 psi):

① to ② t: 0.1ml/minute (2 drops/minute)

Pilot Ratio: standard

Pilot Ratio: Standard to pressure 3:1

Check Spring Bias: 2bar (29psi) standard;

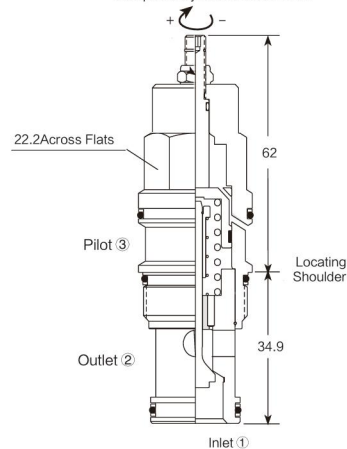
Temperature: -40°C ~ 120°C

Fluids: Mineral-based or synthetics with lubricating properties at viscosities of 7.4 to 420 cSt (50 to 2000 ssu)

Cavity: T10-3B; See bottom of this catalog.

DIMENSIONS

Turn screw clockwise to reduce setting and release load.
Complete Adjustment 3 3/4 Turns



TO ORDER

