

## DESCRIPTION

A screw-in, cartridge-style, pilot-operated, hydraulic check valve for use in blocking or load-holding circuits.

## OPERATION

The INPC08-30 allows flow passage from ② to ③, while normally blocking flow from ③ to ②. Flow will be allowed from ③ to ② when sufficient pressure is applied at ①.

The cartridge has a 3:1 pilot ratio, meaning that at least one-third of the load pressure held at ③ is required at ① to open the valve. The check is spring-biased to assure holding in static or no-load conditions. A sealed pilot piston option is available.

## FEATURES

- Hardened seat for long life and low leakage.
- Optional sealed piston.
- Optional spring ranges.
- Compact size.

## RATINGS

**Operating Pressure:** 240 bar (3500 psi)

**Flow:** See Performance Chart

**Internal Leakage:** at 240 bar (3500 psi):

③ to ② : 0.25 ml/minute (2 drops/minute)

② to ① without sealed piston: 115 ml/minute (7 cu. in./minute)

② to ① with sealed piston: zero leakage

**Pilot Ratio:** 3:1

**Check Spring Bias:** 1.72 bar (25 psi) standard;

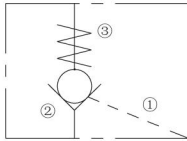
**With sealed piston option:** 6.2 bar (90 psi) minimum

**Temperature:** -40°C ~ 120°C

**Fluids:** Mineral-based or synthetics with lubricating properties at viscosities of 7.4 to 420 cSt (50 to 2000 ssu)

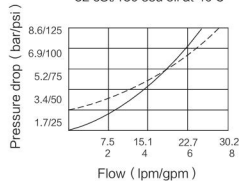
**Cavity:** T08-3A; See bottom of this catalog.

## ISO SYMBOL

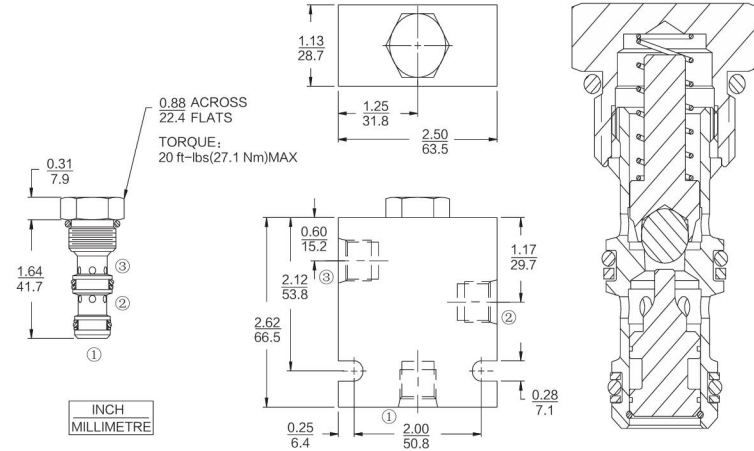


## PERFORMANCE (Cartridge Only)

③ to ② —; ② to ③ - - -  
32 cSt/150 ssu oil at 40°C



## DIMENSIONS



## MATERIALS

**Cartridge Weight:**

0.08kg (0.18 lbs) ;

Steel with hardened work surfaces.

Zinc-plated exposed surfaces.

Buna N O-rings and back-ups standard.

**BODY Weight:** 0.27kg (0.60 lbs) ;

Anodized high strength

aluminum alloy, rated to 207

bar (3000 psi). Ductile iron bodies available; dimensions may differ.

## TO ORDER

INPC08-30

### Options

None (Blank)

### Porting

Cartridge Only 0

SAE6 6T

3/8 in. BSP\* 3B

### Bias Spring

(Blank) 1.72 bar/25 psi (Std) \*

70 4.8 bar/70 psi

90 6.2 bar/90 psi

120 8.2 bar/120 psi

270 18.3 bar/270 psi

### Seals

Buna N (Std.) N

Buna N with Sealed Piston NS

Fluorocarbon V

Fluorocarbon with Sealed Piston VS