

**DESCRIPTION**

A screw-in, cartridge-style, pilot-operated, spool-type, hydraulic directional valve for three-way circuits requiring remote pilot actuation.

**OPERATION**

The INTS10-26 blocks flow from 1 to 2 until sufficient pressure is present at 1 to open the pilot section by offsetting the electrically induced solenoid force. With no current applied to the solenoid, the valve will relieve at approximately 100 psi.

The optional manual override allows the valve to be set when the electric supply is lost. The manual setting is added to the electric setting. To prevent the system from being over pressurized, the manual override should always be disengaged prior to applying power to the coil.

**FEATURES**

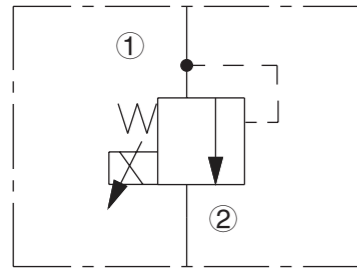
- Hardened spool and cage for long life.
- Industry common cavity.

**RATINGS**

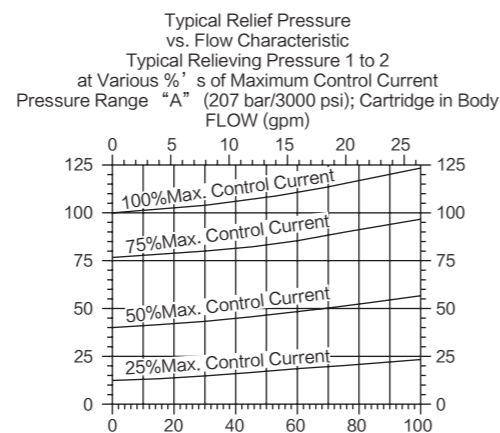
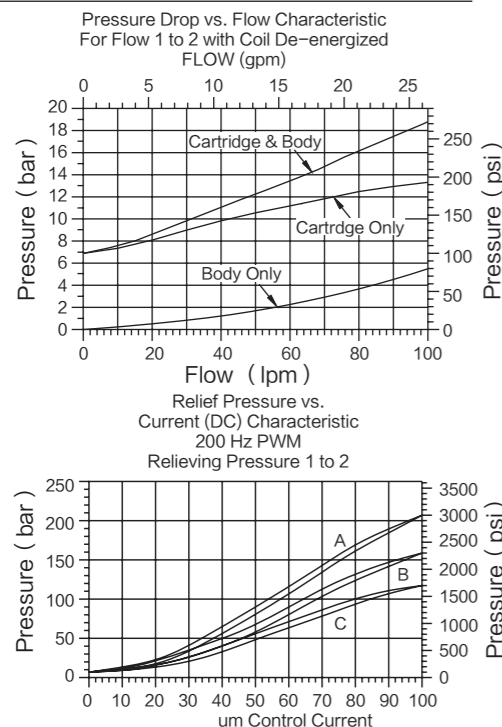
**Maximum Operating Pressure:** 241 bar (3500 psi)  
**Maximum Control Current:** 1.10 amps for 12 VDC coil; 0.55 amps for 24 VDC coil  
**Relief Pressure Range from Zero to Maximum Control Current:**  
**A:** 6.9 - 207 bar (100 - 3000 psi) **C:** 6.9 - 117 bar (100 - 1700 psi)  
**B:** 6.9 - 159 bar (100 - 2300 psi)  
**Rated Flow:** 94.6 lpm (25 gpm), DP=13.1 bar (190 psi), Cartridge only, 1 to 2 coil de-energized  
**Maximum Pilot Flow:** 0.76 lpm (0.2 gpm)  
**Hysteresis:** Less than 3%  
**Flow Path:** Free Flow: 1 to 2 coil de-energized; Relieving: 1 to 2 coil energized  
**Temperature:** -40 to 100° C (-40 to 212° F) with standard Buna N seals  
**Fluids:** Mineral-based or synthetics with lubricating properties at viscosities of 7.4 to 420 cSt (50 to 2000 sus);  
**Installation Recommendation:** When possible, the valve should be mounted below the reservoir oil level. This will maintain oil in the armature preventing trapped air instability. If this is not feasible, mount the valve horizontally for best results.  
**Cavity:** T10-2B; See bottom of this catalog.

**ISO SYMBOL**

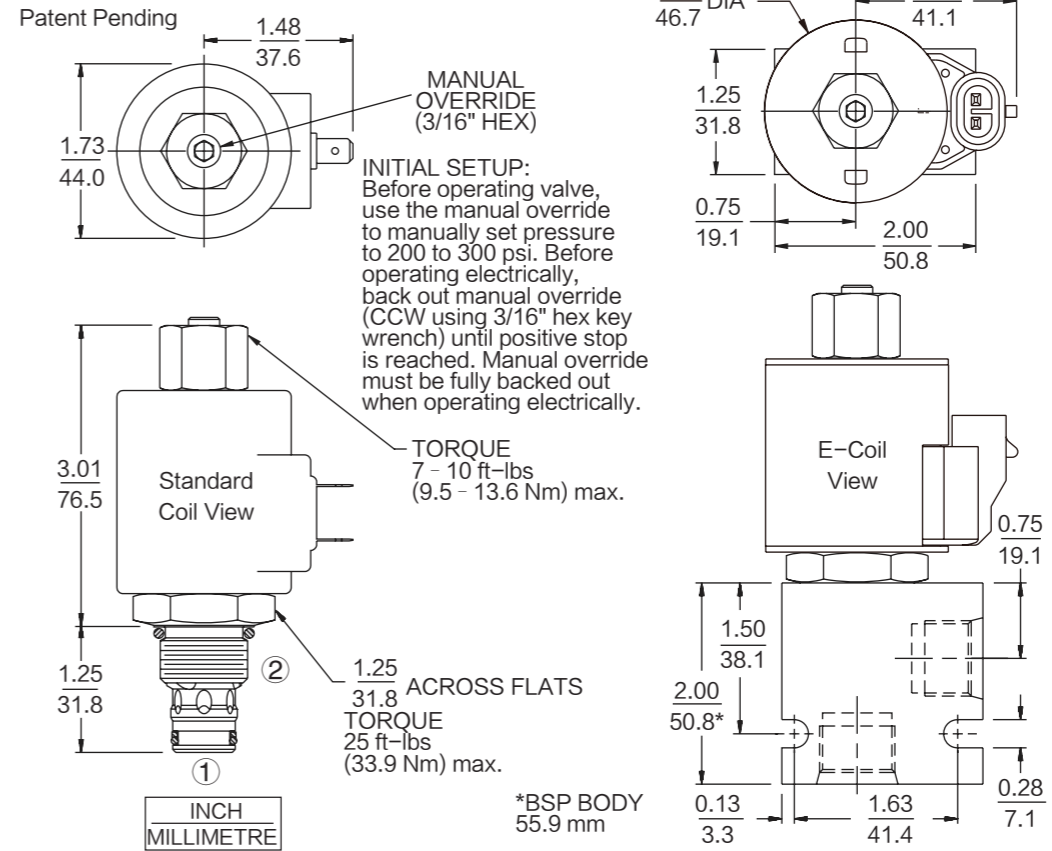
**USASI/ISO:**



**PERFORMANCE (Cartridge Only)**



**DIMENSIONS**



**MATERIALS**

**Cartridge:** Weight: 0.25 kg. (0.55 lbs.)  
 Steel with hardened work surfaces. Zinc-plated exposed surfaces. Buna NO-rings and polyester elastomer backups standard. Optional polyurethane seals with fluorocarbon back-up recommended for pressures over 240 bar (3500 psi).

**Standard Ported Body:** Weight: 0.16 kg. (0.35 lbs.)  
 Anodized high-strength 6061 T6 aluminum alloy, rated to 207 bar (3000 psi). Ductile iron bodies available;

**Standard Coil:** Weight: 0.32 kg. (0.7 lbs.)  
 Unitized, thermoplastic encapsulated, Class H high temperature magnetwire.

**E-Coil:** Weight: 0.41 kg. (0.9 lbs.) Fully encapsulated with rugged external metal shell. Rated up to IP69K with integral connectors.

**TO ORDER**

