

DESCRIPTION

A screw-in, cartridge-style, pilot-operated, spool-type reducing/relieving valve, which can be infinitely adjusted across a prescribed range using a variable electric input. Pressure output is proportional to DC current input. This valve is intended for use as a pressure limiting device in demanding applications.

OPERATION

With current applied to the valve coil, INTS10-36 blocks flow from ② to ① until sufficient pressure is present at ① to open the pilot section by offsetting the electrically induced solenoid force. Increasing electric current will increase the control (reduced) pressure at ①. With no current applied to the solenoid, the valve will relieve pressure at ① at approximately 6.9 bar (100 psi), regardless of pressure at ②.

The INTS10-36 has an optional manual override feature. This allows the valve to be set when the electric supply is lost. The manual setting is added to the electric setting, so when using the manual override feature to establish a minimum setting, care is required to prevent the system from becoming over-pressurized.

FEATURES

- Manual Override Options.
- Industry common cavity.
- Deflated options
- Optional waterproof E-Coils rated up to IP69K.
- 12 and 24 volt coils standard.

RATINGS

Max Operating Pressure: 241 bar (3500 psi)

Max Control Current:

12 VDC Coil 为 1.10 A; 24 VDC Coil 为 0.55 A

Relief Pressure Range from Zero to Maximum Control Current:

A: 6.9 - 207 bar (100 - 3000 psi);

B: 6.9 - 159 bar (100 - 2300 psi)

C: 6.9 - 117 bar (100 - 1700 psi)

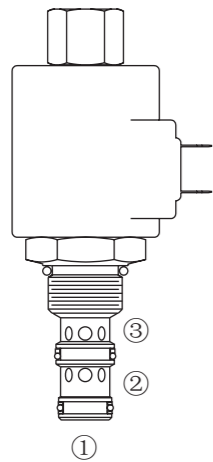
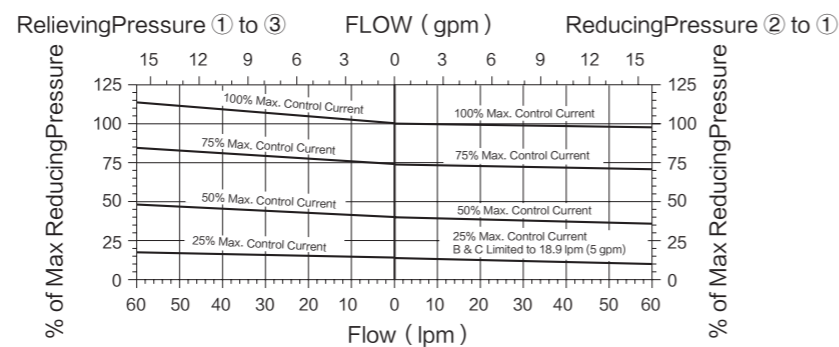
Rated Flow: 57 lpm (15 gpm), $\Delta P=22.8$ bar (330 psi), Cartridge only, ① to ③ coil de-energized Max Pilot Flow: 0.76 lpm (0.2 gpm).

Temperature: -40°C ~ 120°C (-40 ~ 250 °F), with Buna N seals

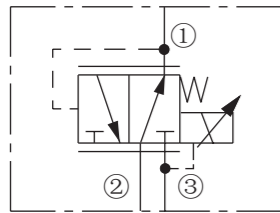
Fluids: Mineral-based or synthetics with lubricating properties at viscosities of 7.4 to 420 cSt (50 to 2000 ssu)

Cavity: T10-3A; See bottom of this catalog

Typical Reducing/Relieving Pressure vs. Flow rating
In different per (%) of Max Typical Reducing Pressure
Spring Range "A" (207 bar/3000 psi); (Body included)

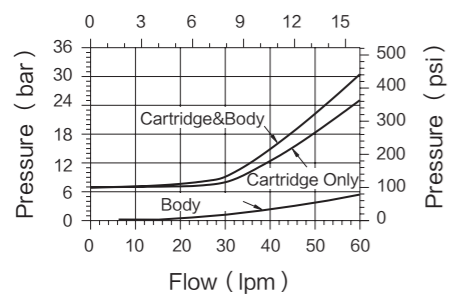


ISO SYMBOL

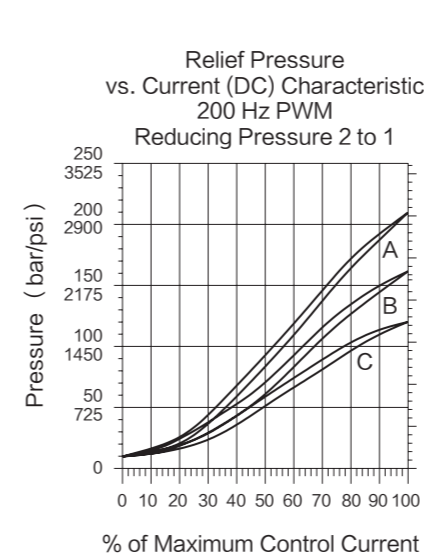


PERFORMANCE (Cartridge Only)

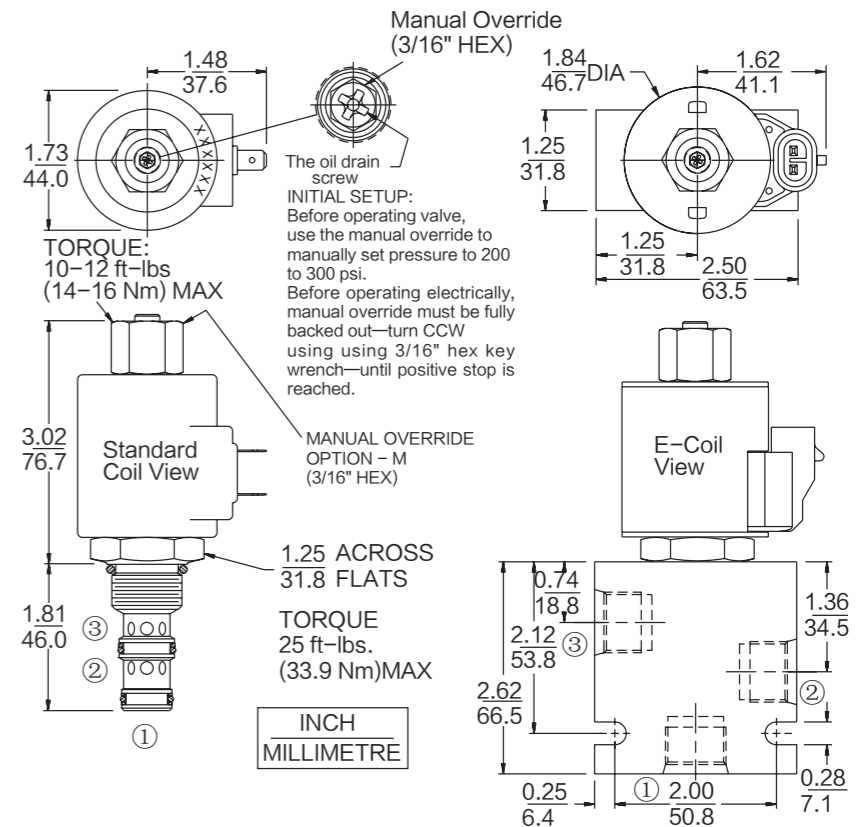
Coil de-energized: ① to ③
Pressure Drop vs. Flow
Ratings Flow (gpm)



PERFORMANCE (Continued)



DIMENSIONS



MATERIALS

Cartridge: Weight: 0.25kg (0.55lbs); Steel with hardened work surfaces. Zinc-plated exposed surfaces. Buna N O-rings and polyester elastomer back-ups standard.

Standard Ported Body: Weight: 0.16kg (0.35lbs); Anodized high strength 6061 T6 aluminum alloy, rated to 240 bar (3500 psi); Ductile iron bodies available; dimensions may differ.

Standard Coil: Weight: 0.27kg (0.60lbs); Unitized thermoplastic encapsulated, Class H high temperature magnet wire.

E-Coil: Weight: 0.41kg (0.9lbs); Fully encapsulated with rugged external metal shell. Rated up to IP69K with integral connectors.

TO ORDER

INTS10-36

MAX Relieving Pressure	Termination (VDC) Std. Coil
207 bar (3000 psi) A	DS Dual Spades
159 bar (2300 psi) B	DG DIN 43650
117 bar (1700 psi) C	DL Leadwires (2)
	DL/W Leads w/ Weatherpak® Connectors
	DR Deutsch DT04-2P
	Termination (VDC) E-Coil
	ER Deutsch DT04-2P (IP69K Rated)
	EL Leadwires (2)
	EY Metri-Pack® 150 (IP69K Rated)
	Voltage Std. Coil
	0 Less Coil**
	10 10 VDC (MAX 1.30 A)
	12 12 VDC (MAX 1.10 A)
	20 20 VDC (MAX 0.65 A)
	24 24 VDC (MAX 0.55 A)
	Options
None (Blank)	
Vent screw S	
Manual Override M	
	Porting
Cartridge Only 0	
SAE 6 6T	
SAE 8 8T	
3/8 in. BSP* 3B	
1/2 in. BSP* 4B	
	Seals
Buna N (Std.) N	
Fluorocarbon V	