

DESCRIPTION

A screw-in, cartridge-style, variable orifice, hydraulic flow control valve with reverse flow check.

OPERATION

The INFC10-21 increases its orifice value from fully closed to fully open with clockwise adjustment rotation.

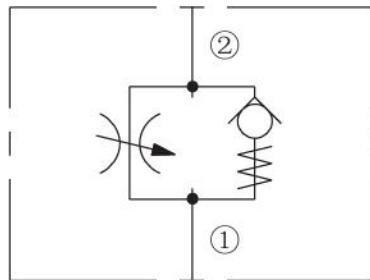
FEATURES

- Adjustments cannot be backed out of the valve.
- Desired settings may be locked down.
- Hardened parts for long life.
- Industry common cavity.
- Aluminum knob option.
- Positive shut-off..
- Linear adjustment.

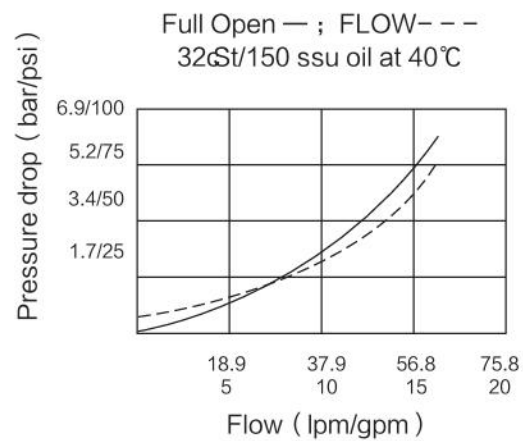
RATINGS

Operating Pressure:240 bar (3500 psi)
Flow:57 lpm (15 gpm) nominal at 5.5 bar (80 psi) at full open 2.0 turns
Internal Leakage:
 0.50 cc/minute (10 drops/minute) max. at shut-off
Adjustment Torque Required:
 0.34 Nm (3 inch-pounds) at 7 bar (100 psi);
 4.50 Nm (40 inch-pounds) at 207 bar (3000 psi)
 Free Reverse Flow Check Bias Spring: See ordering information
Temperature:-40°C ~ 120°C
Fluids:Mineral-based or synthetics with lubricating properties at viscosities of 7.4 to 420 cSt (50 to 2000 ssu)
Cavity: T10-2B; See bottom of this catalog.

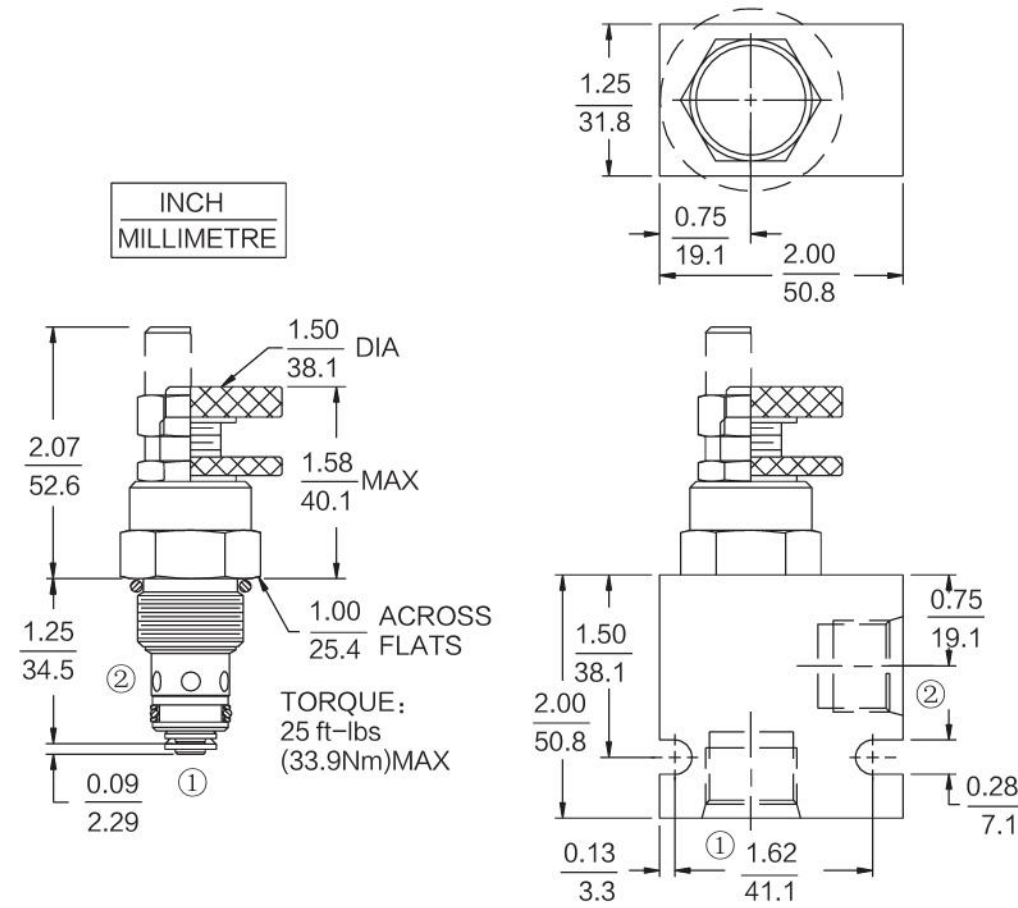
ISO SYMBOL



PERFORMANCE (Cartridge Only)



DIMENSIONS



ORIFICE DISCS WAY NOT BE USED WITH THIS PRODUCT

BSP BODY-55.9

MATERIALS

Cartridge: Weight:0.17kg (0.37lbs) ;
 Steel with hardened work surfaces.
 Zinc-plated exposed surfaces.
 Buna N O-rings and polyester elastomer back-ups standard.

Standard Ported Body:Weight:
 0.16kg (0.35 lbs) ;
 Anodized highstrength 6061 T6 aluminum alloy, rated to 240 bar (3500 psi) ;
 Ductile iron bodies available;
 dimensions may differ

TO ORDER

INFC10-21		Adjustment Option		Spring Setting	
1/4 in. Hex Allen Head	A	05	0.34 bar (5 psid)		
1-1/2 in. Dia. Alum. Knobs	B	25	1.72 bar (25 psid)		
Option A with Cover Cap	C	55	3.78 bar (55 psid)		
Top Knob with Lock Nut	D				
Top Knob Only	E				
		Seals			
		N	Buna N (Std.)		
		V	Fluorocarbon		
		Porting			
		0	Cartridge Only		
		8T	SAE 8		