

DESCRIPTION

A heavy duty, multifunction, screw-in, cartridge-style, spool-type flow divider/combiner.

OPERATION

In the dividing mode, the INFD52-45 will divert input flow from port 3 to ports 2 and 4, based on the ratio specified, regardless of operating pressure. When the flow direction is reversed, the valve will combine flows from 2 and 4 to port 3. Synchronizing flow is provided in both the dividing and combining modes at “bottomed” conditions in cylinder applications and at “stalled” conditions in motor applications.

FEATURES

- Hardened parts for long life.
- Quiet, modulated response.
- Wide operating flow range.
- Synchronizing in dividing and combining modes.
- Floating cage — High installation torque.
- In dusty—common cavity.

RATINGS

Operating Pressure: 345 bar (5000 psi)

Flow Options:

Input Flow: 60.6 lpm (16 gpm); Ratio: 50:50; Model Code: 44

Input Flow: 90.8 lpm (24 gpm); Ratio: 50:50; Model Code: 66

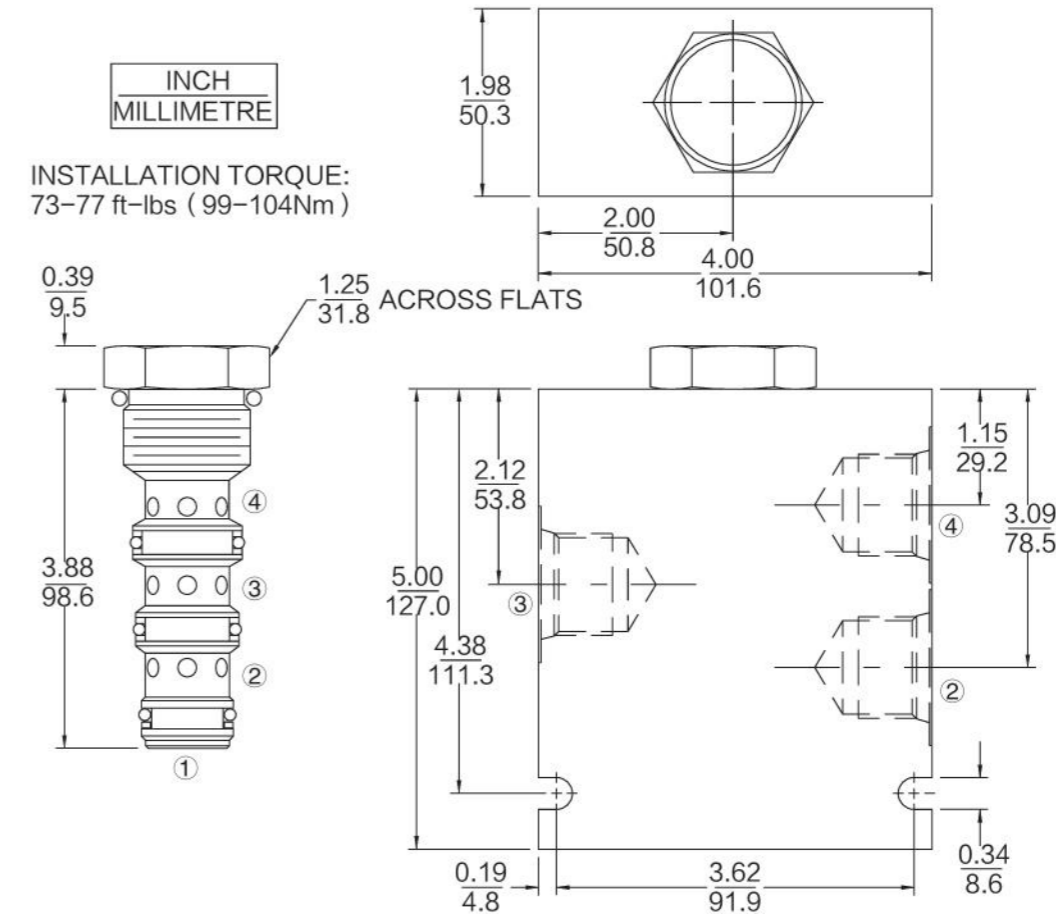
Flow Accuracy: 10% from 25 – 100% of rated flow

Temperature: -40 to 120° C

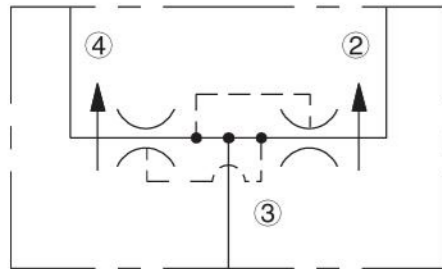
Fluids: Mineral-based or synthetics with lubricating properties at viscosities of 7.4 to 420 cSt (50 to 2000 sus);

Cavity: T12-4A; See bottom of this catalog.

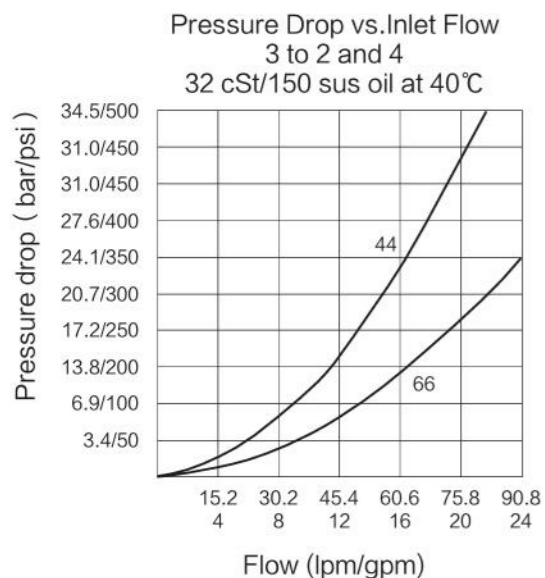
DIMENSIONS



ISO SYMBOL



PERFORMANCE (Cartridge Only)



MATERIALS

Cartridge: Weight: 0.28 kg. (0.61 lbs.)
Steel with hardened work surfaces;
Zinc-plated exposed surfaces.
Buna N O-rings and polyester elastomer back-ups standard.

Standard Ported Body: Ductile iron body required for operation over 207 bar (3000 psi). Aluminum bodies are available for lower pressure operation.

TO ORDER

