

DESCRIPTION

A screw-in, cartridge-style, variable orifice, hydraulic flow restrictor valve.

OPERATION

The INN08-20, increases its orifice value from fully closed to fully open with counter clockwise adjustment rotation.

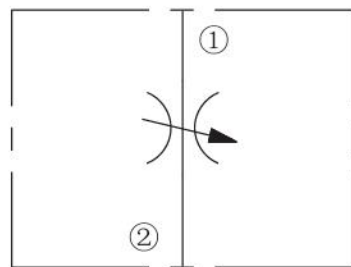
FEATURES

- Adjustments cannot be backed out of the valve.
- Desired settings may be locked down.
- Hardened parts for long life.
- Aluminum knob option.
- Positive shut-off.
- Linear adjustment.
- Compact size.

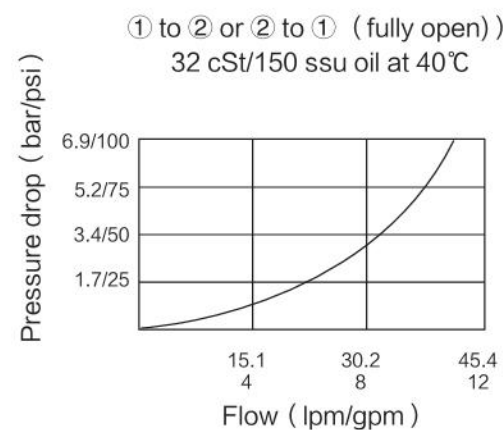
RATINGS

Operating Pressure:240 bar (3500 psi)
Flow:42 lpm (11 gpm) nominal at 7 bar (100 psi) differential at full open 3.5 turns
Internal Leakage:0.25 cc/minute (5 drop/minute) max. at shut-off
Adjustment Torque Required:
 0.56 Nm (5 inch-pounds) at 7 bar (100 psi);
 5.41 Nm (48 inch-pounds) at 207 bar (3000 psi)
Temperature:-40°C ~ 120°C
Fluids:Mineral-based or synthetics with lubricating properties at viscosities of 7.4 to 420 cSt (50 to 2000 ssu)
Cavity: T08-2E; See bottom of this catalog.

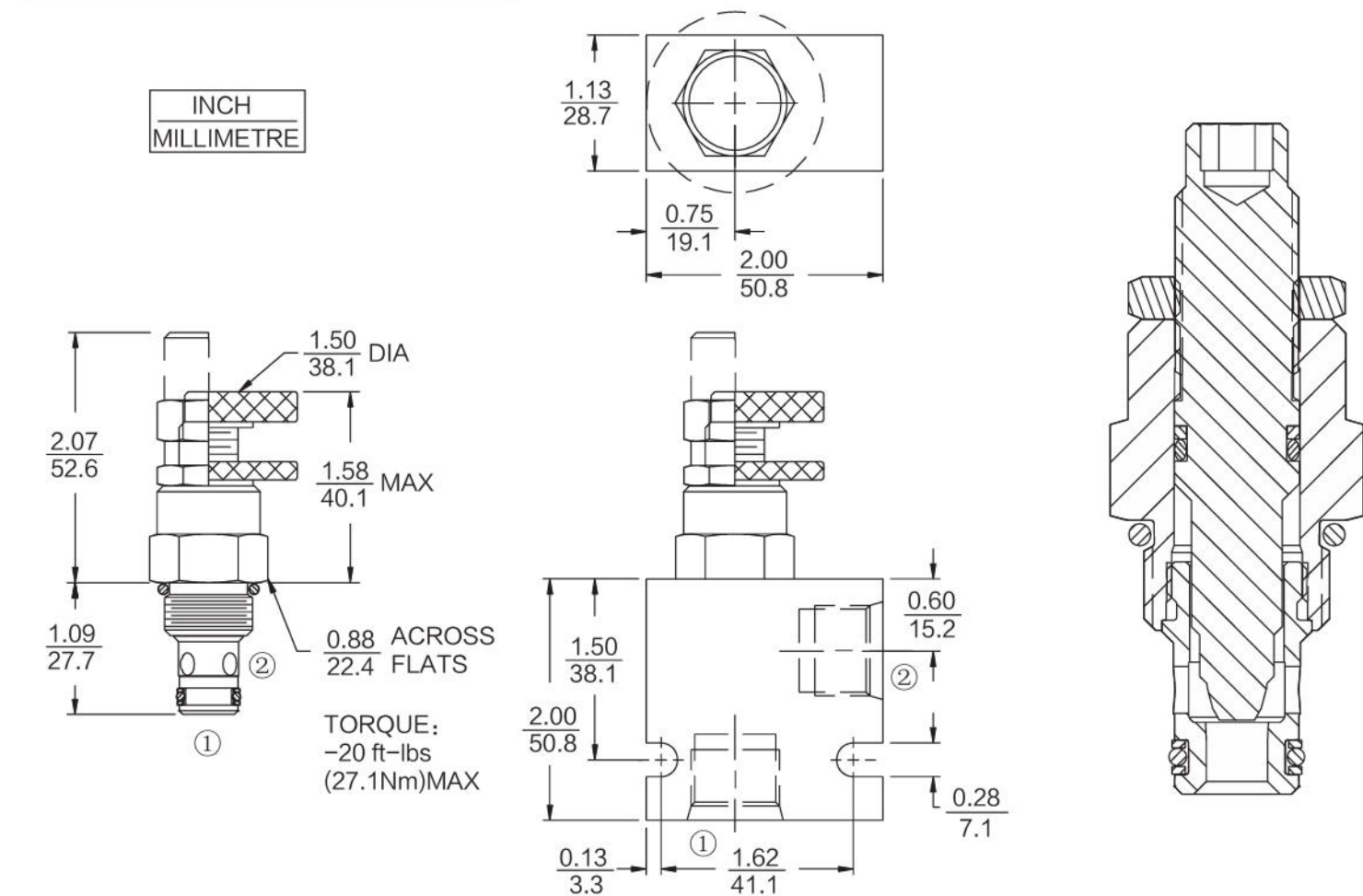
ISO SYMBOL



PERFORMANCE (Cartridge Only)



DIMENSIONS



BSP BODY-55.9

MATERIALS

Cartridge: Weight:0.10kg (0.23 lbs) ;
 Steel with hardened work surfaces.
 Zinc-plated exposed surfaces.
 Buna N O-rings and polyester elastomer back-ups standard.
 Anodized aluminum knobs.

Standard Ported Body:Weight:
 0.16kg (0.35 lbs) ;
 Anodized highstrength 6061 T6 aluminum alloy, rated to 240 bar (3500 psi).
 Ductileiron bodies available; dimensions may differ.

TO ORDER

INN08-20 - -

Adjustment Option	Seals	Porting
1/4 in. Hex Allen Head	A	N Buna N (Std.)
1-1/2 in. Dia. Alum. Knobs	B	V Fluorocarbon
Option A with Cover Cap	C	
Top Knob with Lock Nut	D	
Top Knob Only	E	
Lockwire Holes (with Option C)	L	