

**DESCRIPTION**

A screw-in, cartridge-style, variable orifice, hydraulic flow restrictor valve.

**OPERATION**

The INNV10-20 increases its orifice value from fully closed to fully open with counter clockwise adjustment rotation.

**FEATURES**

- Adjustments cannot be backed out of the valve.
- Desired settings may be locked down.
- Hardened parts for long life.
- Industry common cavity.
- Aluminum knob option.
- Positive shut-off..
- Linear adjustment.

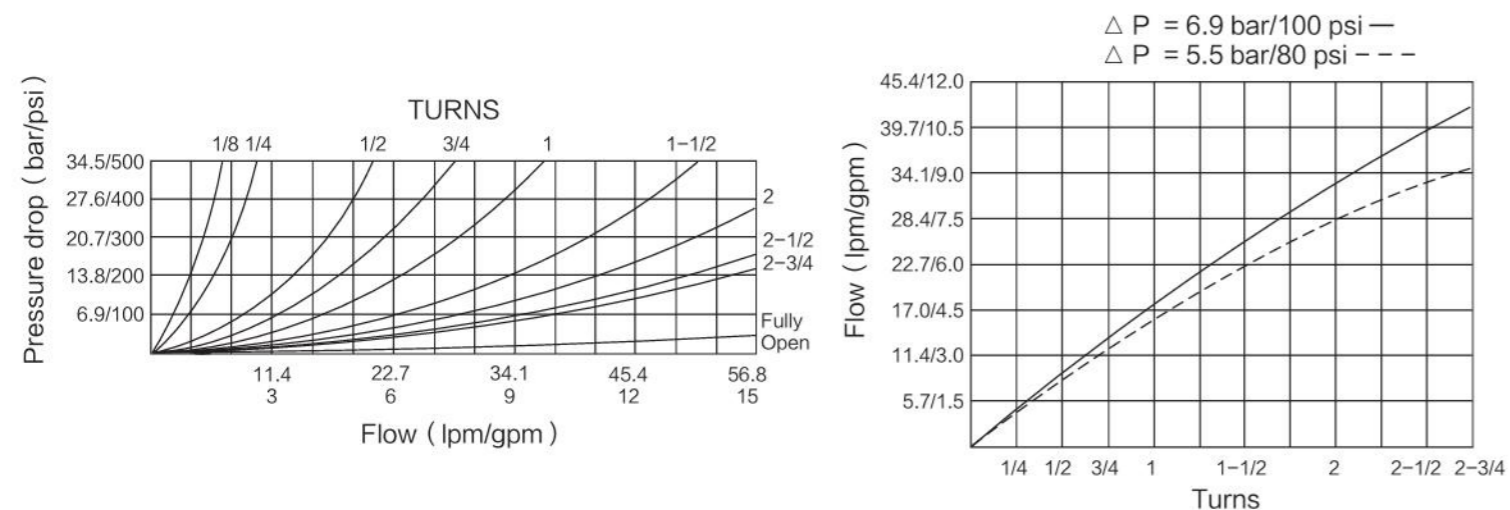
**RATINGS**

**Operating Pressure:**240 bar ( 3500 psi )  
**Flow:**  
 45 lpm (12 gpm) nominal at 7 bar (100 psi) at full open 3.5 turns  
**Internal Leakage:**0.25 cc/minute (5 drop/minute) max. at shut-off  
**Adjustment Torque Required:**  
 0.56 Nm (5 inch-pounds) at 7 bar (100 psi);  
 5.41Nm (48 inch-pounds) at 207 bar (3000 psi)  
**Temperature:**-40°C ~ 120°C  
**Fluids:**Mineral-based or synthetics with lubricating properties at viscosities of 7.4 to 420 cSt (50 to 2000 ssu)  
**Cavity:**T10-2B; See bottom of this catalog.

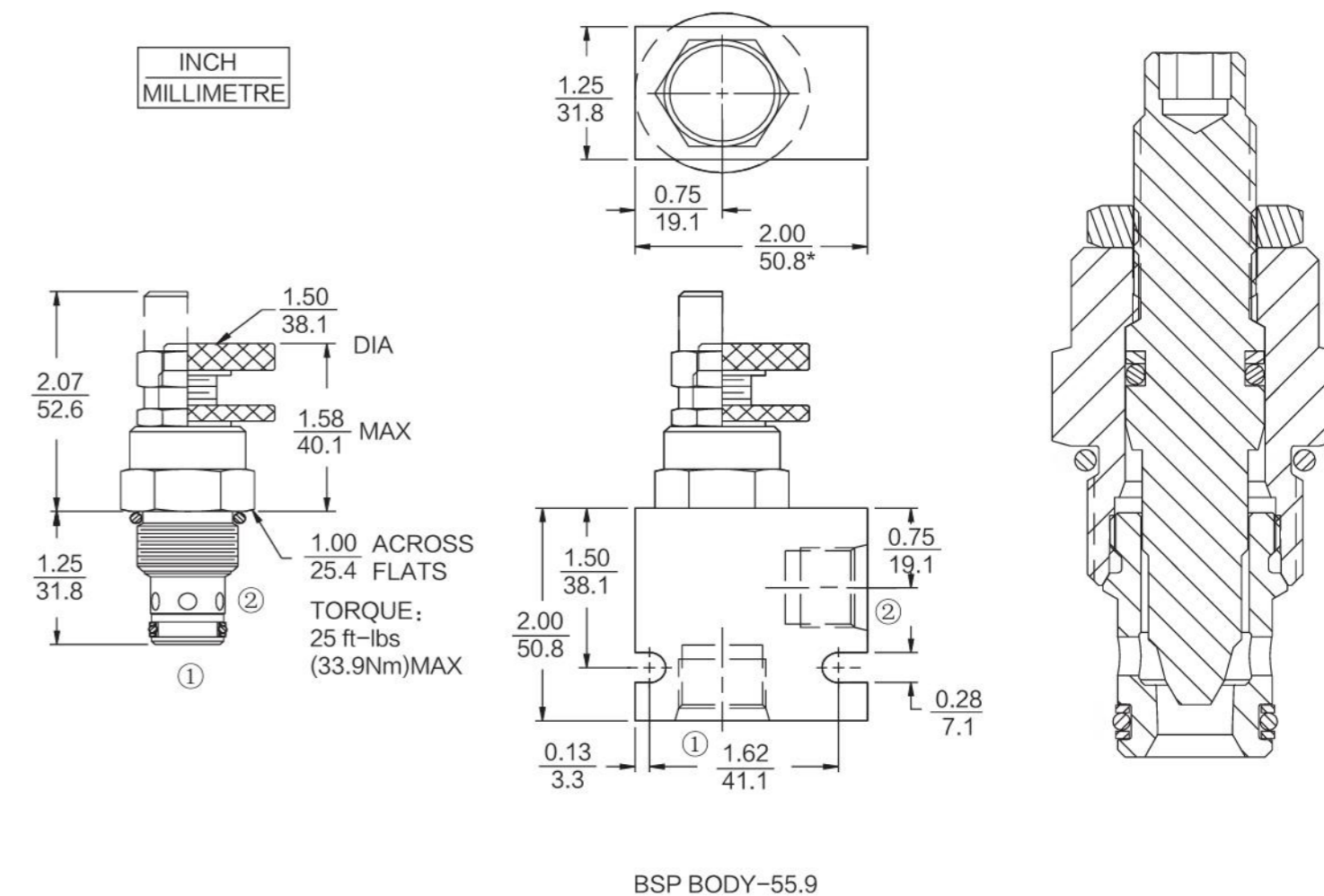
**ISO SYMBOL**



**PERFORMANCE (Cartridge Only)**



**DIMENSIONS**



**MATERIALS**

**Cartridge: Weight:**  
 0.15kg ( 0.33 lbs ) ;  
 Steel with hardened work surfaces.  
 Zinc-plated exposed surfaces.  
 Buna N O-rings and polyester elastomer back-ups standard.  
 Anodized aluminum knobs.

**BODY:Weight:**  
 0.16kg ( 0.35 lbs ) ;  
 Anodized high-strength aluminum alloy, rated to 240 bar (3500 psi).  
 Ductile iron bodies available;  
 dimensions may differ.

**TO ORDER**

INNV10-20 - -

Adjustment Option	Seals	Porting
1/4 in. Hex Allen	N Buna N (Std.)	0 Cartridge Only
Head 1-1/2 in. Dia. Alum.	V Fluorocarbon	6T SAE 6
Knobs Option A with Cover		8T SAE 8
CapTop Knob with Lock		2B 1/4 in. BSP*
NutTop Knob Only Lockwire		3B 3/8 in. BSP*
Holes (with Option C)		4B 1/2 in. BSP*