

DESCRIPTION

A screw-in, cartridge-style, adjustable orifice, pressure-compensated, manually operated, bypass-type hydraulic flow regulating valve. It can be used as a priority-type flow regulator or a restrictive-type 2-way flow regulator when the bypass port (port ②) is blocked.

OPERATION

The INFR10-39 maintains a constant flow rate from 3 regardless of load pressure changes in the system downstream of 3, or in the bypass leg at ②. Reverse flow (③ to ①) bypasses the control orifice.

The regulated flow increases from closed to fully open, with counter-clockwise rotation of the knob.

Note: When used as a bypass flow control in applications where the priority flow port will be blocked by external valving, bypass pressure drop will increase unless a small amount of leakage is provided for the priority port. Consult factory.

FEATURES

- Bypass port ② may be fully pressurized.
- Fine low-torque adjustment.
- Hardened parts for long life.
- Quiet, modulated response.
- Industry common cavity.

RATINGS

Operating Pressure: 240 bar (3500 psi)

Flow Rate:

3-ported regulated flow: 0 - 38 lpm (0 - 10 gpm)

2-ported regulated flow: 0 - 34 lpm (0 - 9 gpm)

Input Flow:

3-ported: 0 - 38 lpm (0 - 10 gpm) nominal;

0 - 57 lpm (0 - 15 gpm) max.

Internal Leakage:

207 bar (3000 psi) : 33cc/minute (2 cu.in./minute)

Adjustment Torque Required:

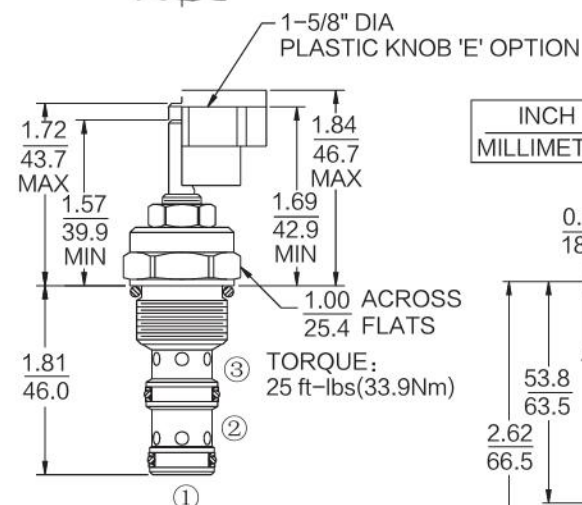
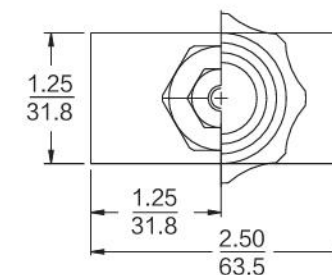
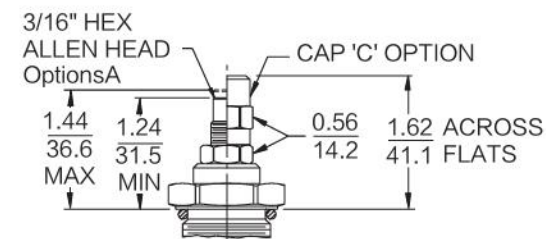
1.7 Nm (15 inch-pounds) at 207 bar (3000 psi)

Temperature: -40°C ~ 120°C

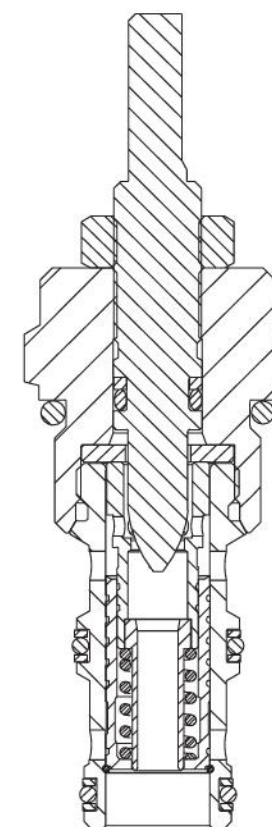
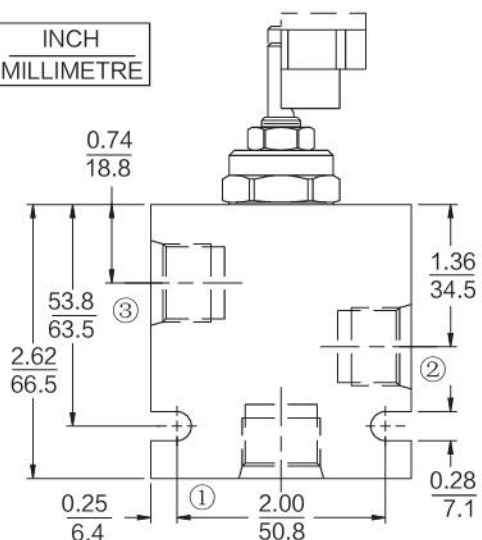
Fluids: Mineral-based or synthetics with lubricating properties at viscosities of 7.4 to 420 cSt (50 to 2000 ssu)

Cavity: T10-3A; See bottom of this catalog.

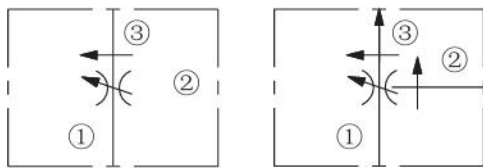
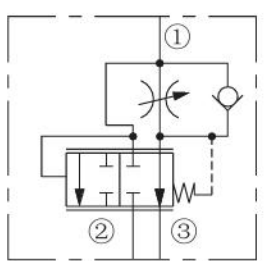
DIMENSIONS



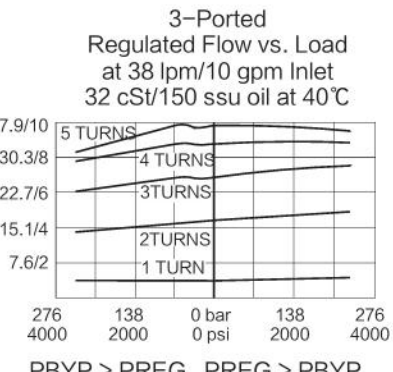
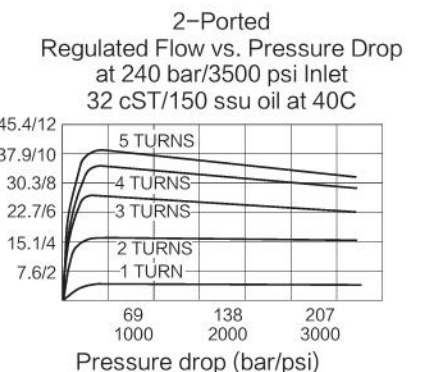
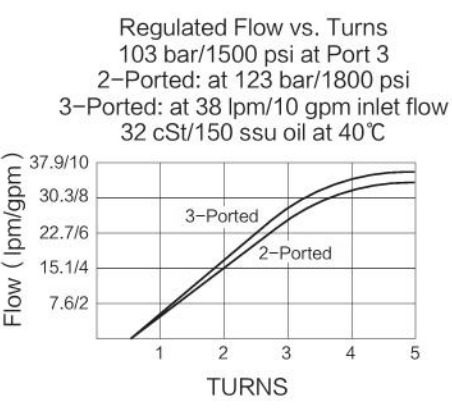
INCH
MILLIMETRE



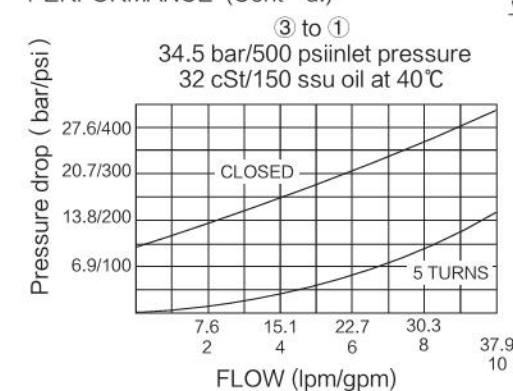
ISO SYMBOL



PERFORMANCE (Cartridge Only)



PERFORMANCE (Cont' d.)



MATERIALS

Cartridge: Weight: .30kg (0.68 lbs) ;
Steel with hardened work surfaces.
Zinc-plated exposed surfaces.
Buna N O-rings and polyester elastomer back-ups standard.

Standard Ported Body: Weight:
0.36kg (0.80 lbs) ;
Anodized high-strength aluminum alloy, rated to 240 bar (3500 psi).
Ductile iron bodies available; dimensions may differ.

TO ORDER

INFR10-39		Seals	
Adjustment Option	Blank	N	Buna N (Std.)
Extended Shaft Only	A	V	Fluorocarbon
3/16 Hex Allen Head	C		
Option A with Cover Cap	E		
Plastic Knob			
		Porting	
		0	Cartridge Only
		6T	SAE 6
		8T	SAE 8
		2B	1/4 in. BSP*
		3B	3/8 in. BSP*