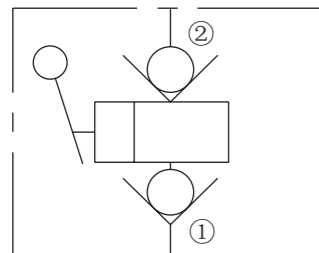
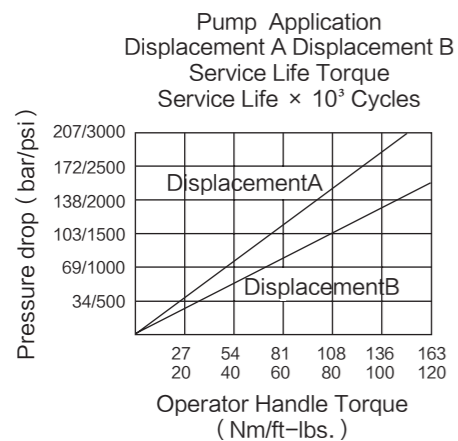


ISO SYMBOL



PERFORMANCE (Cartridge Only)



DESCRIPTION

A screw-in, cartridge-style, push and release type hand pump with two built-in checks.

OPERATION

INHP10-21 provides hydraulic flow to 0.65 cu. in. per stroke, at pressures to 207 bar(3000 psi). Integral suction and outlet checks provide a compact device which delivers true operational system flows. See chart for handle torque requirements.

Note: As with any mechanical hydraulic actuator (piston rods, rotating pump shaft, etc.) the shaft will become coated with a minute amount of oil from the internal high pressure system. The rod protruding from the hand pump may feel damp with oil after use. This is desirable because the oil coating serves to lubricate the shaft seal, reducing friction and assuring extended seal life.

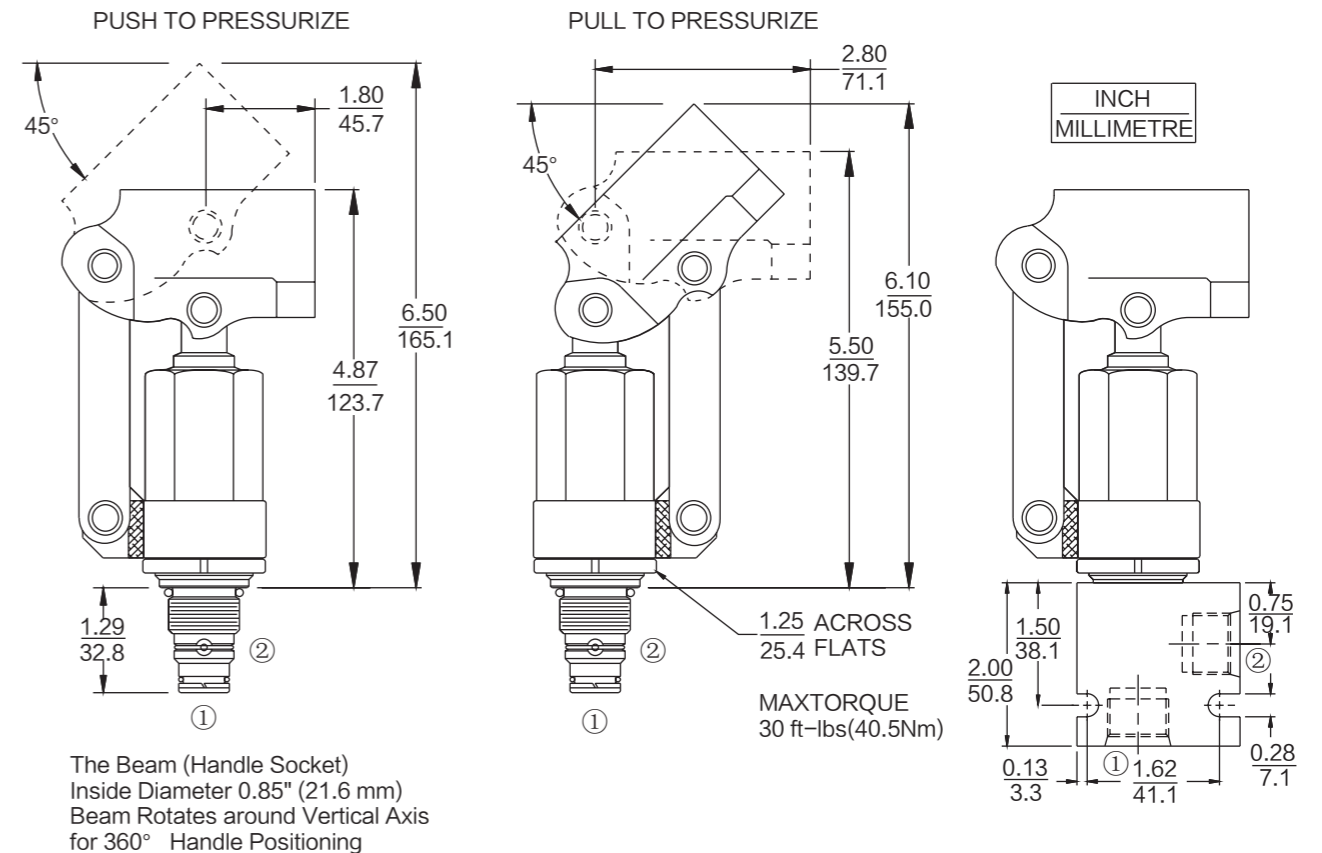
FEATURES

- Hardened parts for long life.
- Handle beam rotates 360°
- Push or pull linkage standard.
- Heavy duty construction.
- Industry common cavity.
- Displacement up to 10.6 cc (0.65 cu in.) per stroke.

RATINGS

Operating Pressure: 207 bar (3000 psi)
Flow: Up to 10.6 cc (0.65 cu. in.) per stroke
Leakage: 5 drops/minute (0.25 ml/min) maximum at 207 bar (3000 psi)
Suction Pressure: 194 mm Hg (7.6 in. Hg, 104 in. H₂O) less than atmospheric pressure
Temperature: -40°C ~ 120°C
Fluids: Mineral-based or synthetics with lubricating properties at viscosities of 7.4 to 420 cSt (50 to 2000 sus)
Cavity: T10-2B; See bottom of this catalog.
Handle Kit: 40 cm (16 in.) long handle with plastic grip, 2.65 kg. (1.2 lbs.)

DIMENSIONS



ORIFICE DISCS WAY NOT BE USED WITH THIS PRODUCT

BSP BODY 55.9mm

MATERIALS

Cartridge: Weight: 4.19 kg (1.9 lbs.);
 Steel with hardened work surfaces.
 Zinc-plated exposed surfaces.
 Buna N O-rings and polyester elastomer back-ups standard.
 Anodized aluminum knobs.

Standard Ported Body: Weight: 0.16 kg (0.35 lbs);
 Anodized highstrength aluminum alloy, rated to 207 bar (3000 psi).
 Ductile iron bodies available; dimensions may differ.

TO ORDER

INHP10-21		Displacement	
**Push or Pull		A 7.4 ml (0.45 cu. in.) per stroke	
Push Handle Actuation A		B 10.6 ml (0.65 cu. in.) per stroke	
Pull Handle Actuation B			
*Shipped as kit for installation			
Ports		Seals	
Cartridge Only	0	N	Buna N (Std.)
SAE 6	6T	V	Fluorocarbon
SAE 8	8T		
1/4 in. BSP*	2B		
3/8 in. BSP*	3B		
1/2 in. BSP*	4B		