

DESCRIPTION

The valve are normally closed,pressure-limiting valves used to protect hydraulics components from pressure transients.

OPERATION

The valve are normally closed,pressure-limiting valves used to protect hydraulics components from pressure transients.Fast opening and closing is gained at the expense of smoothness. when the pressure at inlet(port ①)reaches the valvs setting. the valve starts to open to tank (port ②),throtting flow to limit the pressure rise.These valves have low pressure rise vs.flow and are vary fast.

FEATURES

- Suitable for use in cross port relief circuits.if used in cross port relief circuits,consider spool leakage.
- Not suitable for use in load holding applications due to spool leakage.
- Back pressure on the tank port (port2)is directly additive to the valve setting at a 1:1 ratio.
- Hardened poppet and seat for long life.
- Compact size.

RATINGS

Max. Operating Pressure: 350 bar (5100 psi)
Flow: See Performance Chart
Internal Leakage:50cc/min.at 70 Bar.
 Factory Pressure Setting Established at 4 gpm(15L/min).
Response Time – Typical:2 ms

Standard Spring Ranges:

- A 7 ~ 210 bar Preset=70 bar
- B 3.5 ~ 105 bar Preset=70 bar
- C 10.5 ~ 420 bar P reset=70 bar
- D 1.7 ~ 55 bar Preset=30 bar
- E 1.7 ~ 28 bar Preset=14 bar
- W 10.5 ~ 315 bar Preset=70 bar

Temperature: -40 to 120° C with standard Buna seals

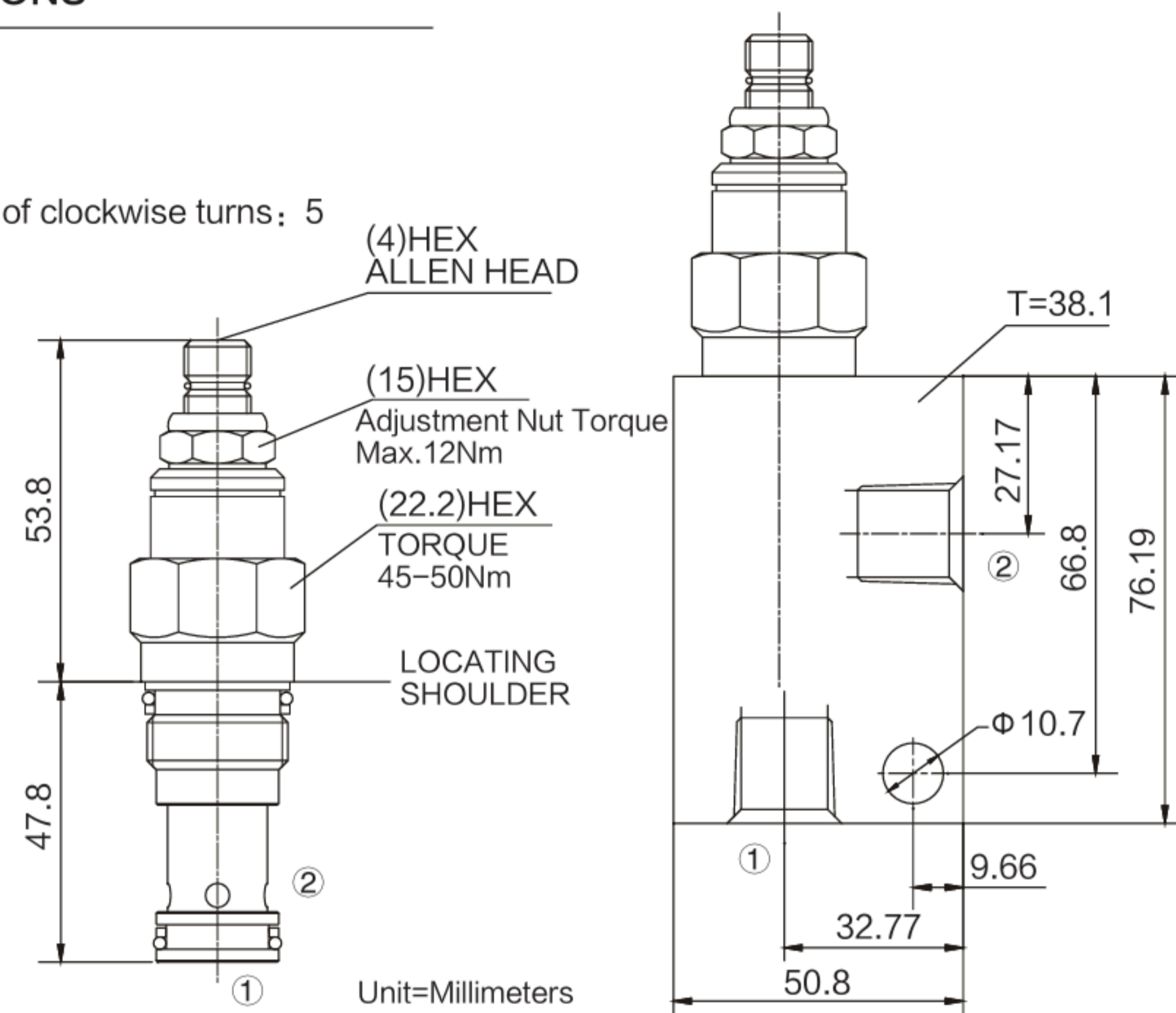
Fluids: Mineral-based or synthetics with lubricating properties at viscosities of 7.4 to 420 cSt (50 to 2000 sus)

Installation: No restrictions

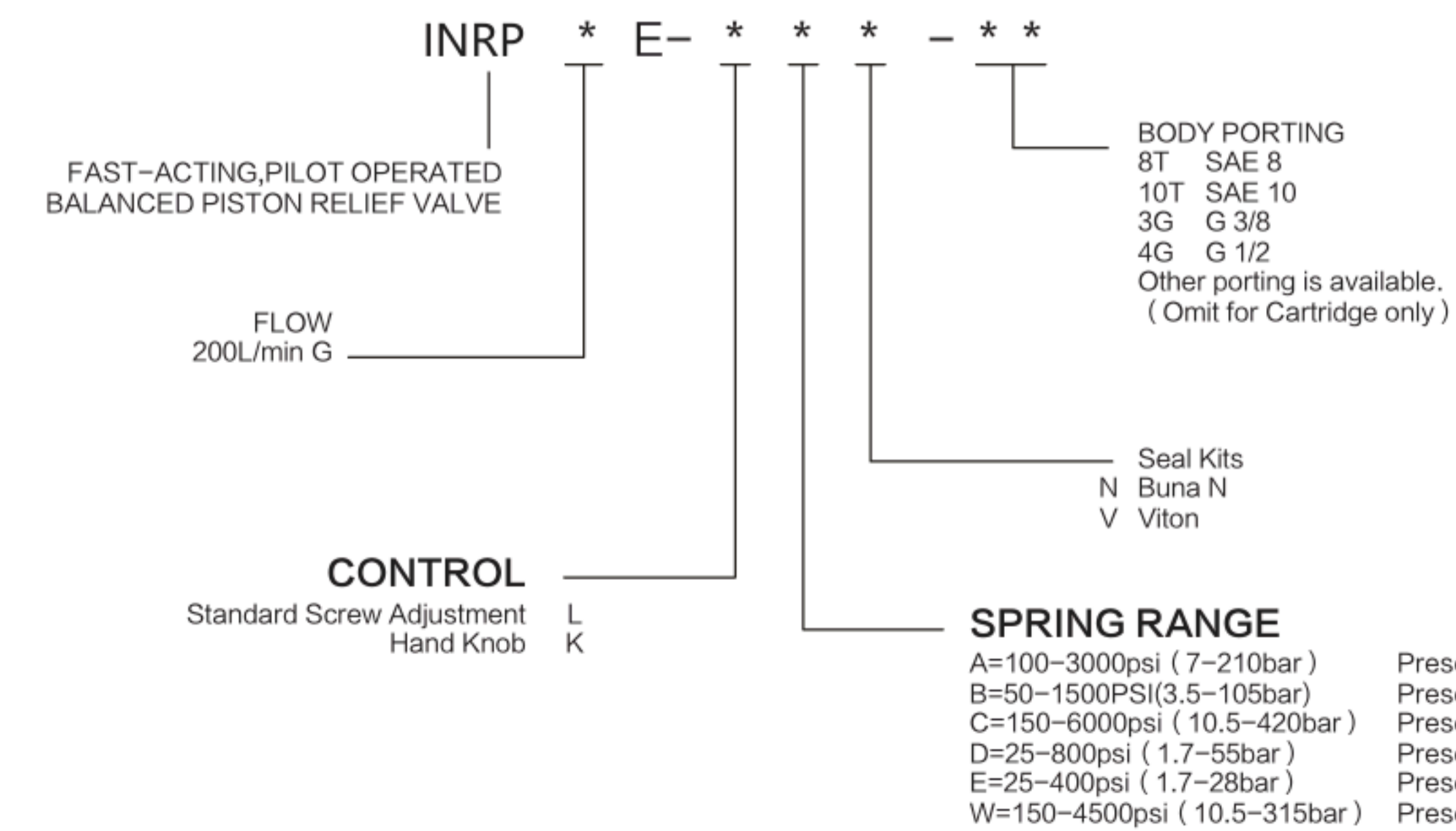
Cavity: T12-2H,See bottom of this catalog.

DIMENSIONS

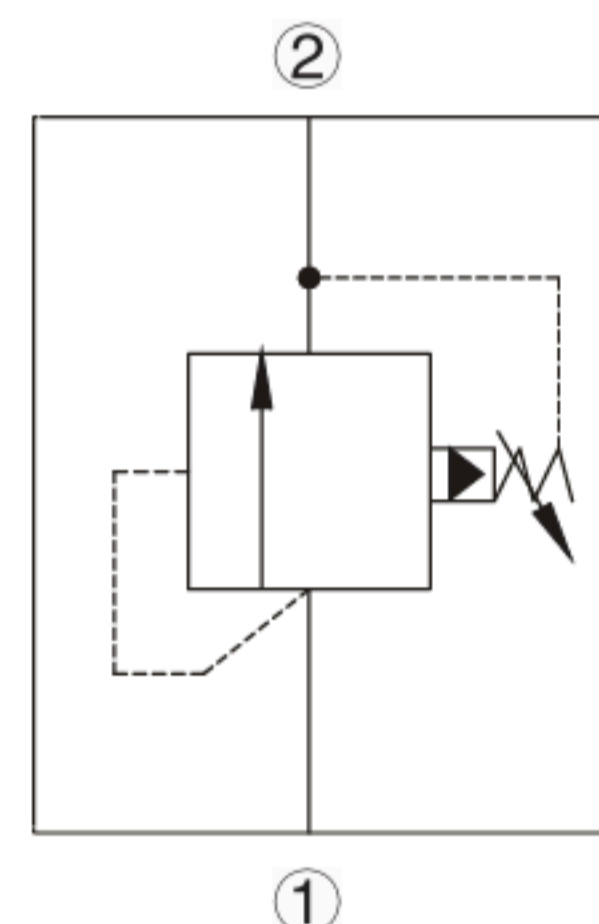
Number of clockwise turns: 5



TO ORDER



ISO SYMBOL



PERFORMANCE (Cartridge Only)

