

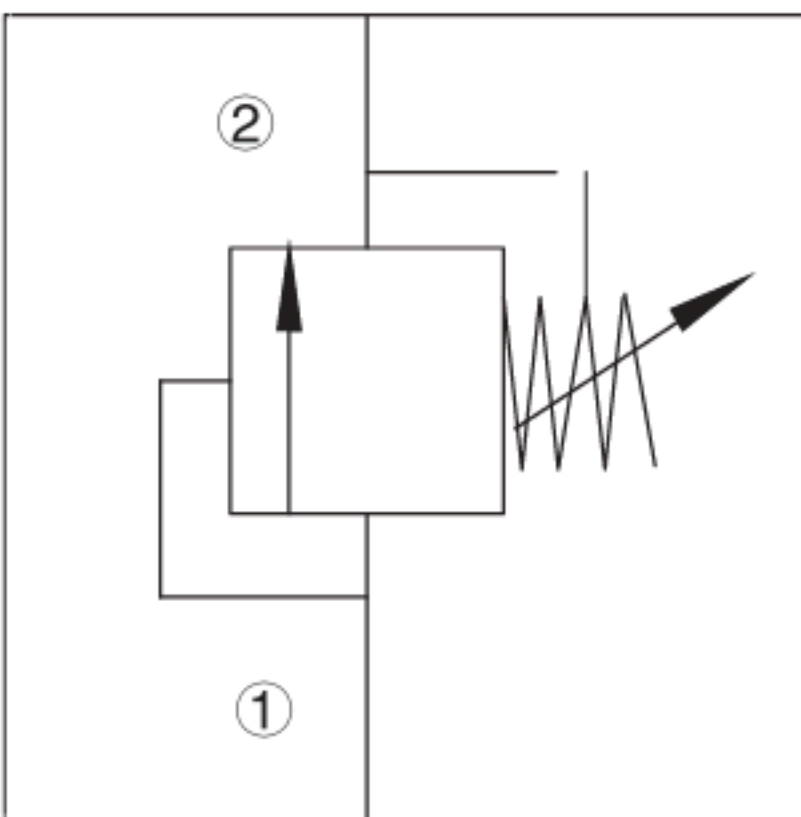
**DESCRIPTION**

A screw-in, cartridge-style, direct-acting, poppet-type

**OPERATION**

The valve prevents flow ① to ② until the set crack pressure at ① is achieved. The poppet then unseats allowing flow from ① to ② protecting the circuit from over pressurization.

**ISO SYMBOL**



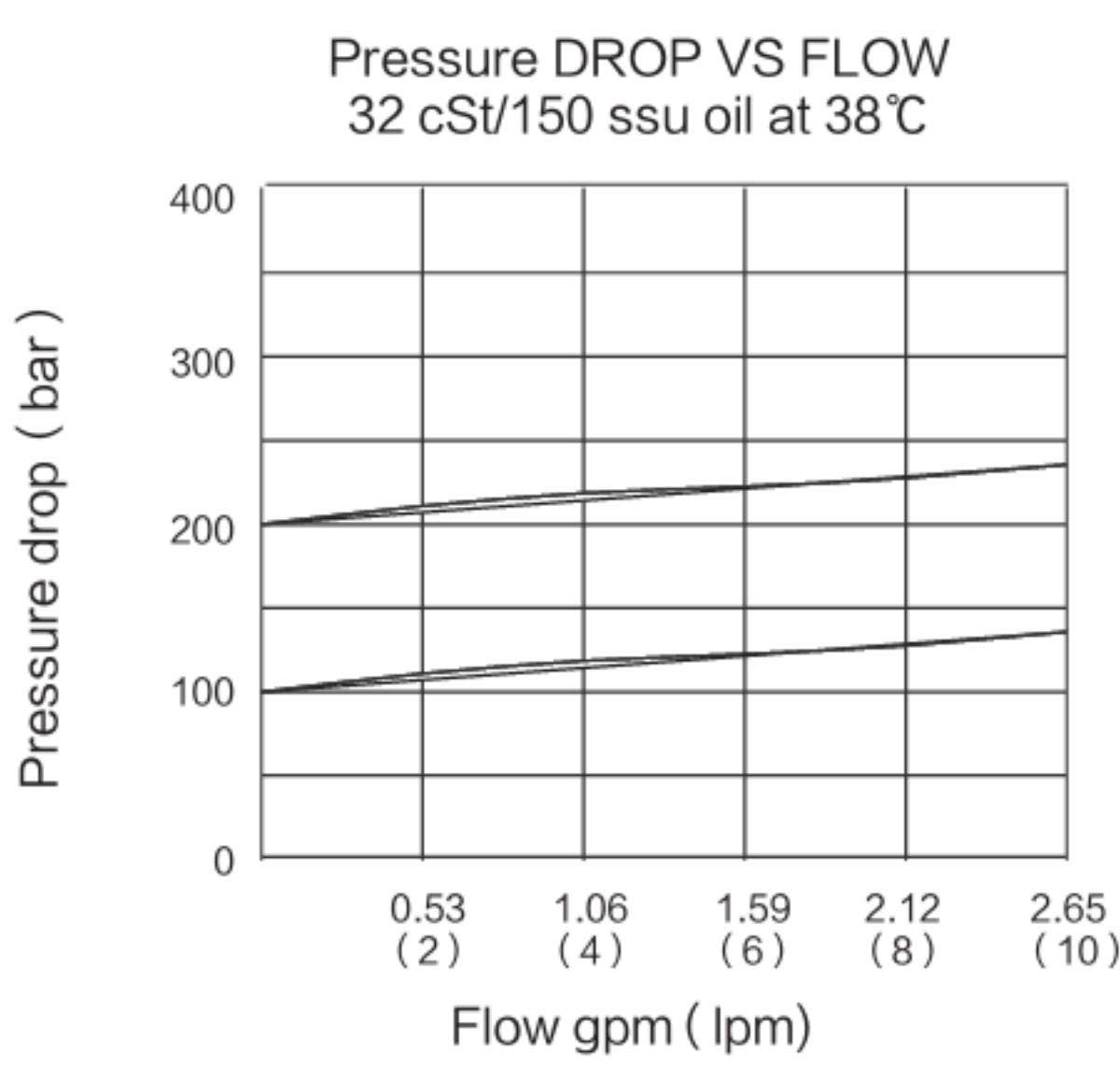
**FEATURES**

- Fast response to pressure surges.
- Hardened poppet and seat for long life.
- Adjustment prevents spring from going solid.
- Industry common cavity.
- Compact size.

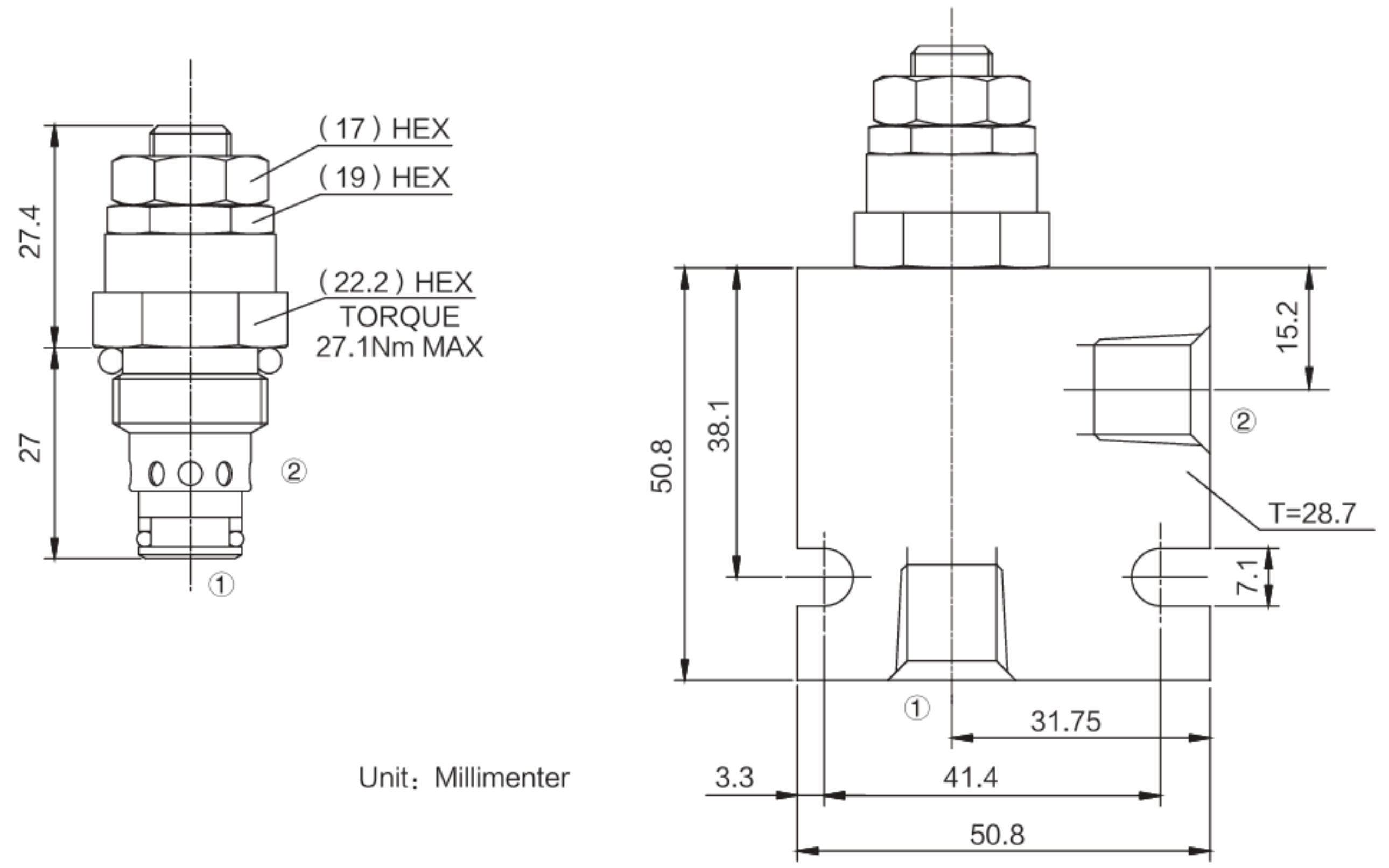
**RATINGS**

**Operating Pressure:** 250 bar  
**Max. Flow:** See Performance DROP VS FLOW graph  
**Internal Leakage:** 5 drops/min.MAX.to 80% of nominal setting  
**Reseat Pressure:** Nominal 80% of crack pressure [crack(set)pressure at 0.95lpm/0.25gpm]  
**Spring Ranges:** 40 to 270 bar; preset: 160bar  
**Temperature:** -22° F to +250° F (-30°C to +120°C)  
**Recommended Filtration:** ISO 19/15  
**Fluids:** Mineral-based fluids.  
 For other fluid compatibility consult factory  
**Cavity:** T08-2E; See bottom of this catalog.  
**Body Material:** Anodized 6061T6 aluminum alloy rated at 207 Bar.

**PERFORMANCE (Cartridge Only)**



**DIMENSIONS**



Unit: Millimeter

**MATERIALS**

**Cartridge: Weight:** 0.23kg ( 0.50lbs ) ;  
 Steel with hardened work surfaces.  
 Zinc-plated exposed surfaces.  
 Buna N O-rings and polyester standard. Anodized aluminum knobs and caps.  
**BODY: Weight:**  
 0.16 kg ( 0.35lbs ) ;  
 Anodized highstrength 6061 T6 aluminum alloy, rated to 240 bar ( 3500 psi ) ;  
 Ductile iron bodies available; dimensions may differ

**TO ORDER**

