

DESCRIPTION

A screw-in, cartridge-style, direct-acting, spool-type, hydraulic sequence valve with external pilot and internal spring chamber drain.

OPERATION

INPS10-32 blocks flow from ③ to ②. On attainment of a pre-determined pressure at ①, the cartridge shifts to open ③ to ②. Since the spring chamber is vented at ②, back pressure at ② will directly (1:1) affect the valve's setting.

FEATURES

- Adjustments cannot be backed out of the valve.
- Adjustments prohibit springs from going solid.
- Optional spring ranges to 145 bar (2100 psi).
- Hardened spool and cage for long life.
- Industry common cavity.

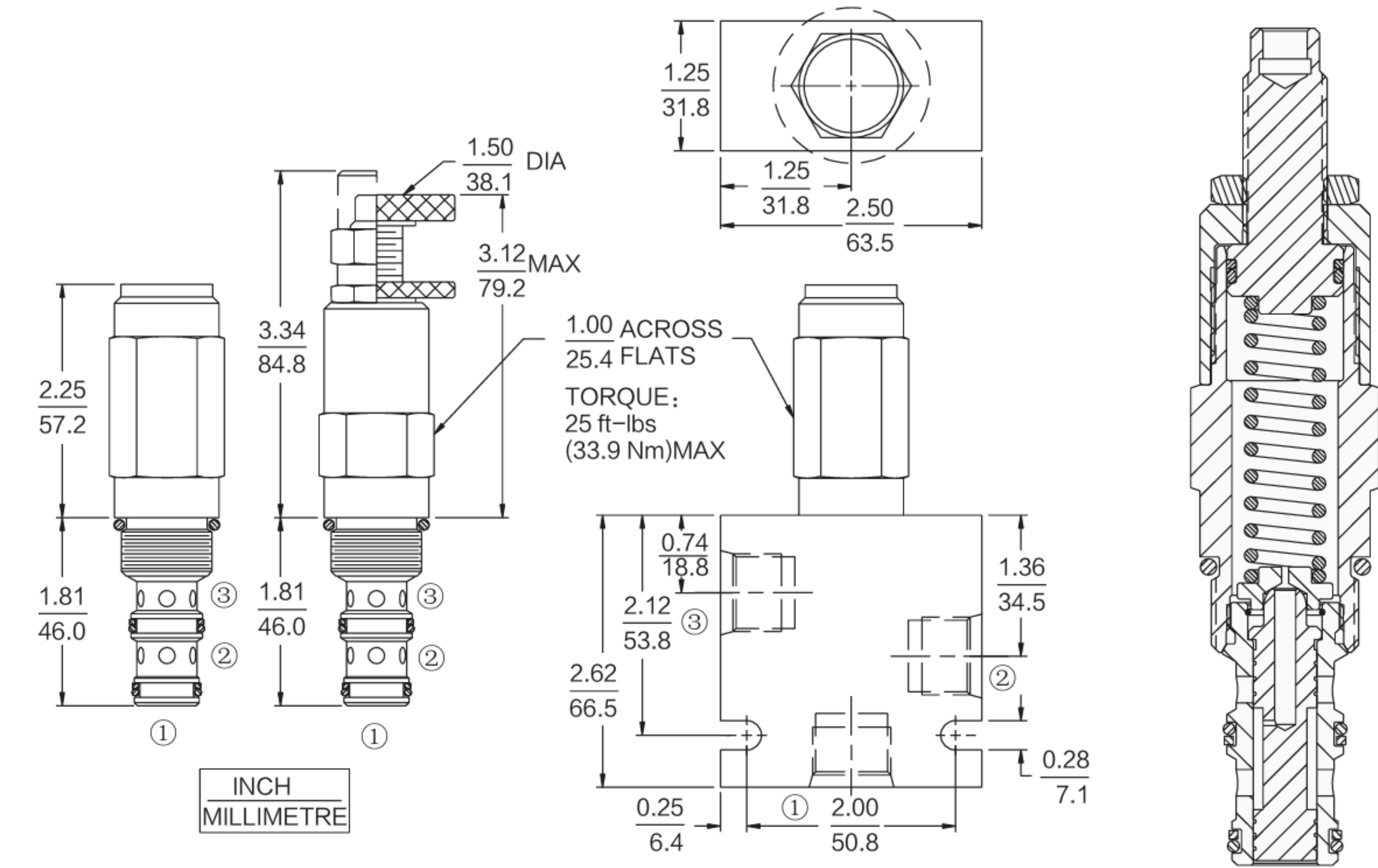
RATINGS

Operating Pressure: 207 bar (3000 psi)
Flow: See Performance Chart
Internal Leakage: 在 82 cc/minute (5 cu. in./minute) max. to 90% of nominal setting

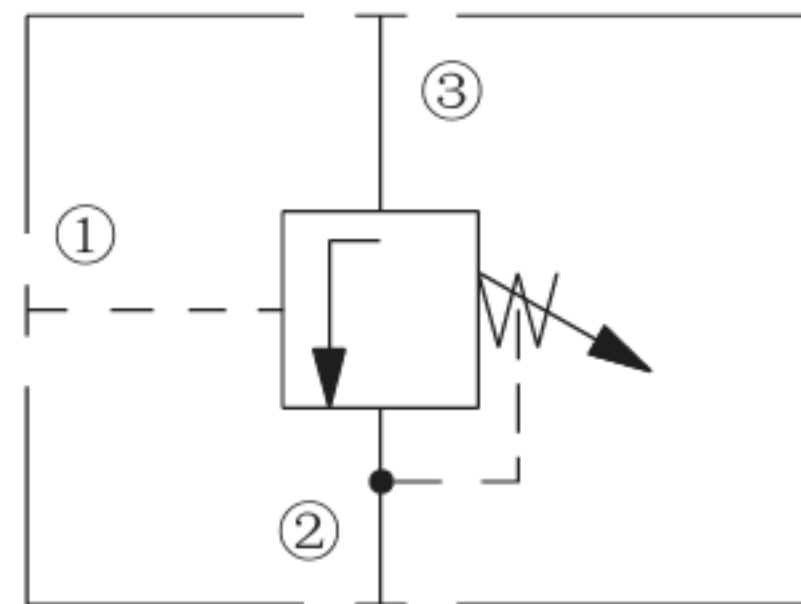
Standard Spring Ranges:
 5.5 ~ 27.6 bar (80 ~ 400 psi)
 13.8 ~ 55.2 bar (200 ~ 800 psi)
 20.7 ~ 103.4 bar (300 ~ 1500 psi)
 27.6 ~ 144.8 bar (400 ~ 2100 psi)

Temperature: -40°C ~ 120°C (with Buna N seals)
Fluids: Mineral-based or synthetics with lubricating properties at viscosities of 7.4 to 420 cSt (50 to 2000 ssu)
Cavity: T10-3A; See bottom of this catalog.

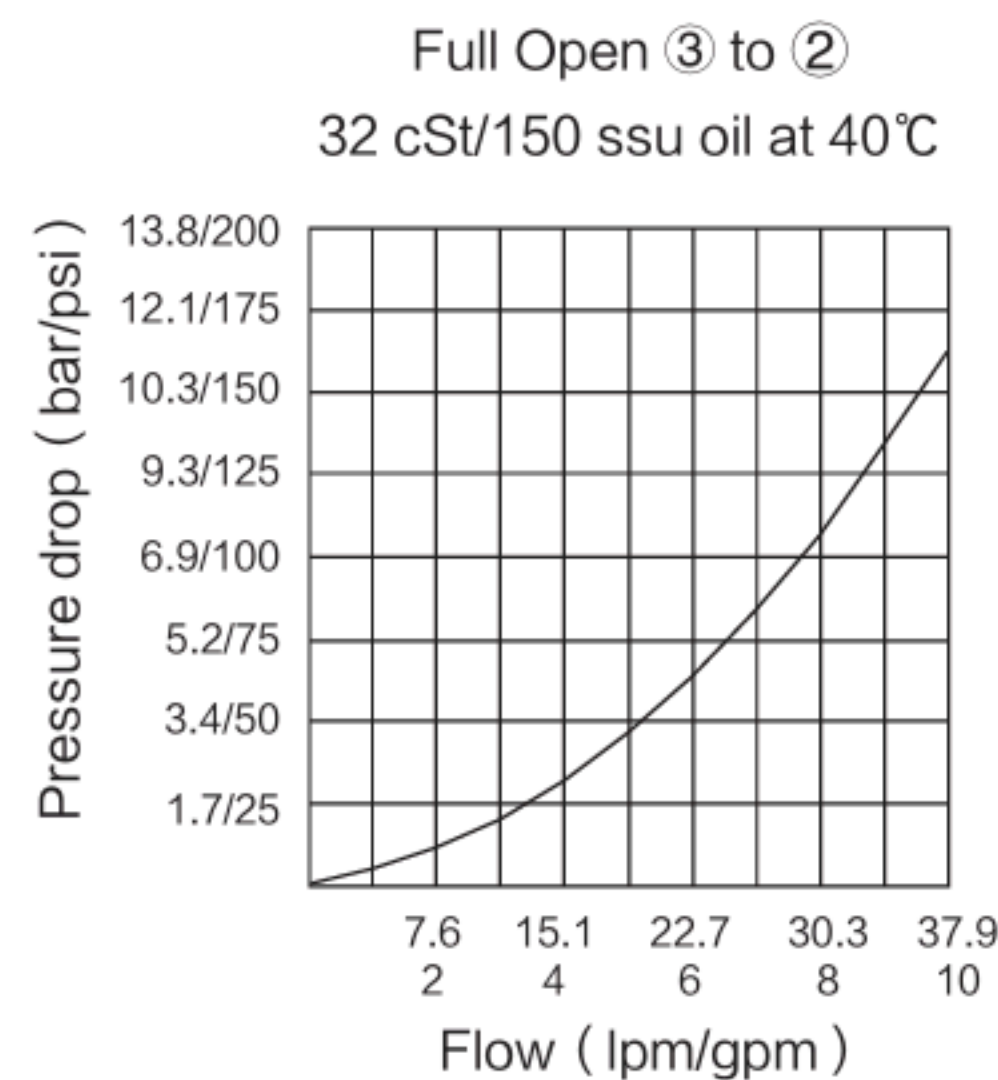
DIMENSIONS



ISO SYMBOL



PERFORMANCE (Cartridge Only)



MATERIALS

Cartridge: Weight: 0.27 kg (0.60 lbs); INPS10-32
 Steel with hardened work surfaces.
 Zinc-plated exposed surfaces.
 Buna N O-rings and polyester standard. Anodized aluminum knobs and caps.
BODY: Weight: 0.36 kg (0.80 lbs); Anodized high strength 6061 T6 aluminum alloy, rated to 240 bar (3500 psi); Ductile iron bodies available; dimensions may differ.

TO ORDER

Adjustment Option		Setting in bar†	
1/4 in. Hex Allen Head	A	(Blank)	for Adjustable, or
1-1/2 in. Dia. Alum. Knobs	B	M25	25 bar
Option A with Cover	C	M100	100 bar
Cap Factory Preset Non-Adj.	F	Setting in psi†	
Factory Preset Hidden Adj.	H	(Blank)	for Adjustable, or
Option C w/Lockwire Holes	L	9.0	900 psi
		21.0	2100 psi
		Spring Range	
		4	5.5 to 27.6 bar (80 to 400 psi)
		8	13.8 to 55.2 bar (200 to 800 psi)
		15	20.7 to 103.4 bar (300 to 1500 psi)
		21	27.6 to 144.8 bar (400 to 2100 psi)
		Seals	
		Buna N	N
		Fluorocarbon	V

†Adjustable valves will be