

DESCRIPTION

A screw-in, cartridge-style, pilot-operated, spool-type, hydraulic sequence valve with internal pilot and external spring chamber drain.

OPERATION

In its steady state, the INPS10-36 blocks flow from 1 to 2, with the spring chamber drained at 3.

On attainment of a predetermined pressure at 1, the cartridge shifts to open 1 to 2. Note that back-pressure on 3 adds to the spring setting value.

FEATURES

- Adjustments cannot be backed out of the valve.
- Adjustments prohibit springs from going solid.
- Optional spring ranges to 207 bar (3000 psi).
- Hardened spool and cage for long life.
- Industry common cavity.

RATINGS

Operating Pressure: up to 241 bar (3500 psi)
Sequence Pressure: up to 207 bar (3000 psi)
Flow: to 56.8 lpm (15 gpm)
Standard Spring Ranges: 5.5 to 207 bar (80 to 3000 psi) shown in To Order section.

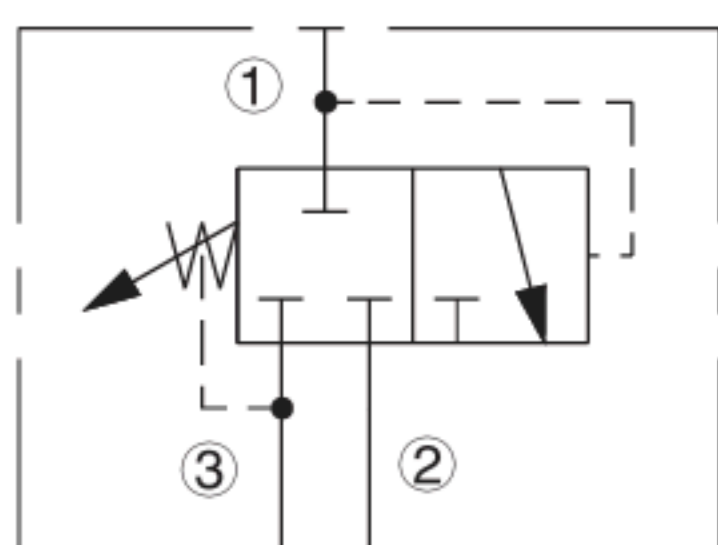
Due to manufacturing tolerances, it may be possible to adjust the valve either lower or higher than the nominal ratings shown. If the valve is adjusted beyond the recommended maximum pressure range for F and H style adjuster options, the valve may not open to relieve pressure.

Temperature: -40 to 100° C (-40 to 212° F) with standard Buna seals

Filtration: 10 microns nominal or better;
Fluids: Mineral-based or synthetics with lubricating properties at viscosities of

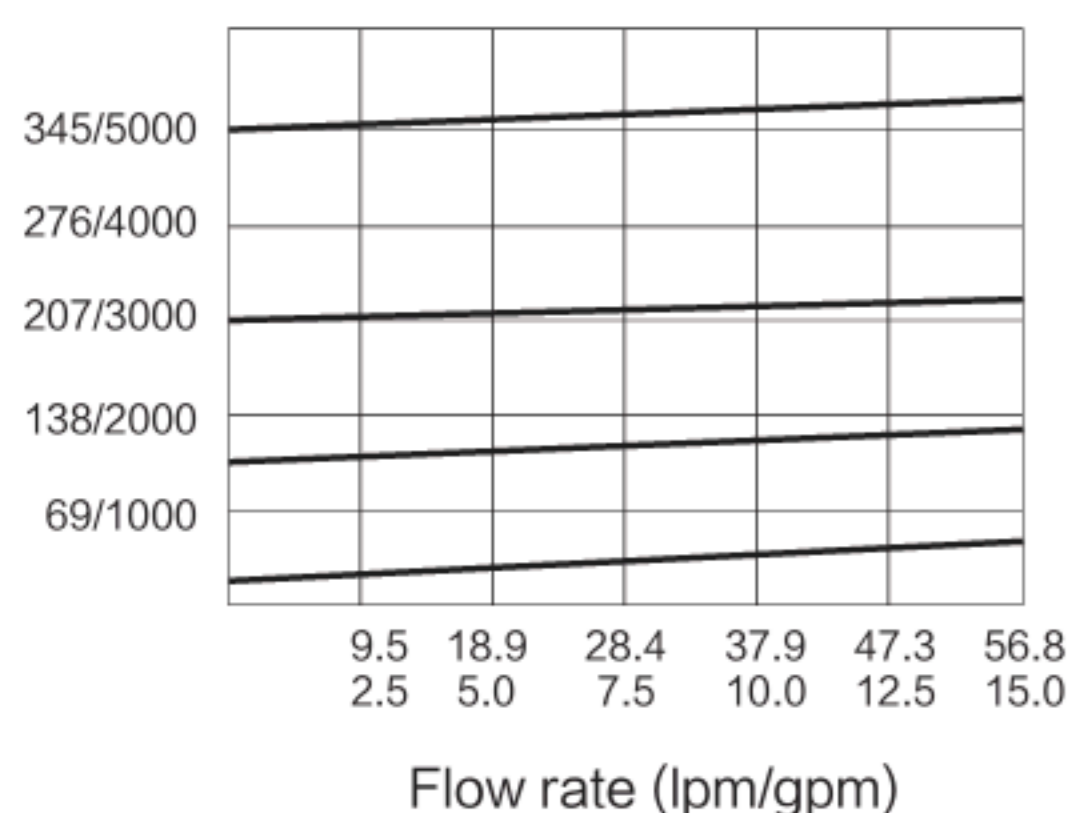
7.4 to 420 cSt (50 to 2000 sus); See Temperature and Oil Viscosity,
Cavity: T10-3A; See bottom of this catalog.

ISO SYMBOL

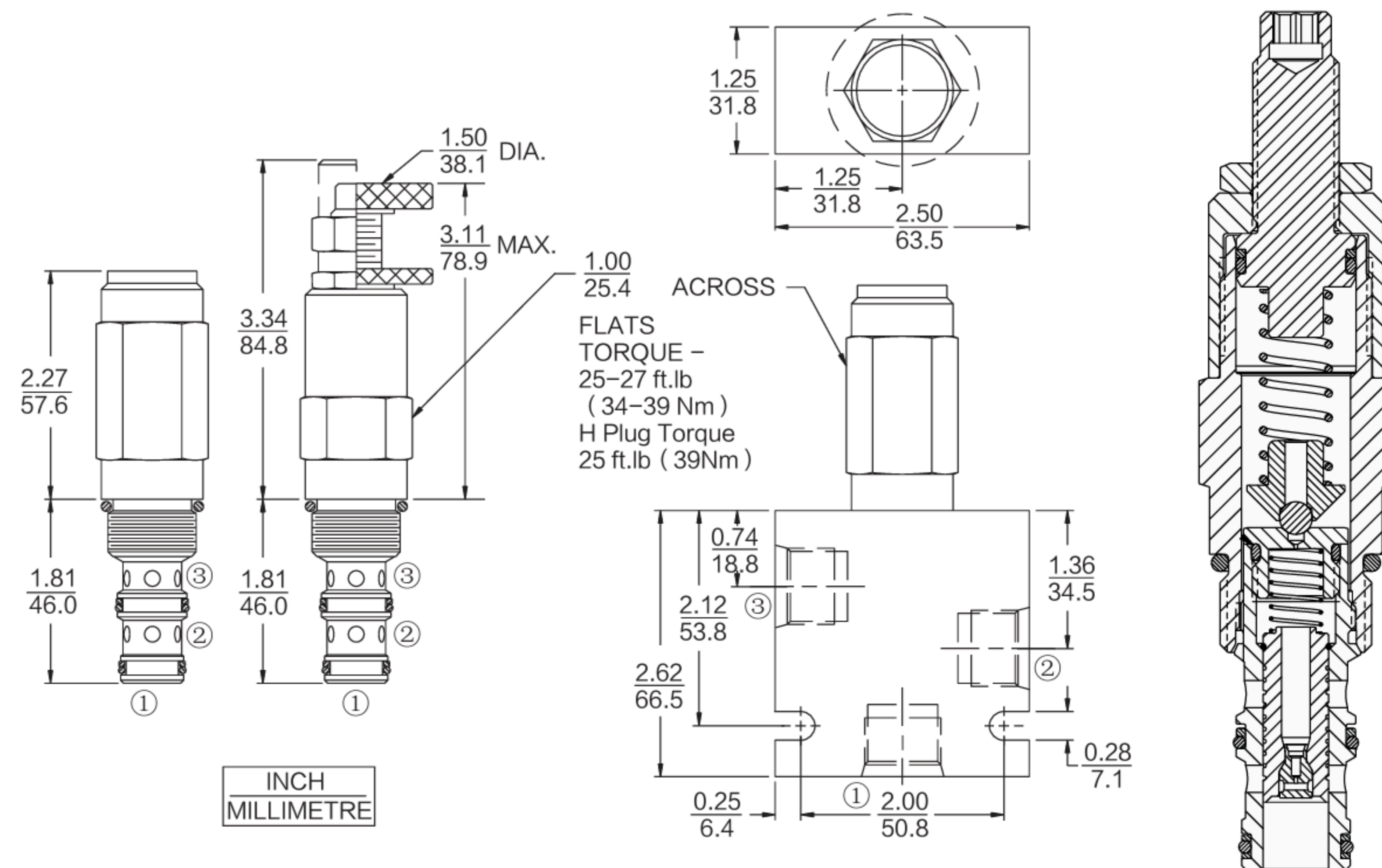


PERFORMANCE (Cartridge Only)

Pressure vs. Flow
 32 cSt/150 sus oil at 40°C (104° F)



DIMENSIONS



MATERIALS

Cartridge: Weight: With manual override options A & F: 0.24 kg (0.54 lb); with manual override option B: 0.27 kg (0.59 lb); with manual override option C & L: 0.29 kg (0.63 lb.); with manual override option H: 0.24 kg (0.53 lb); Steel with hardened work surfaces. Zincplated exposed surfaces. Buna NO-rings and elastomer back-ups standard. Anodized aluminum knobs and caps.

Standard Ported Body: Weight: 0.36 kg (0.80 lb); Anodized high-strength aluminum alloy, rated to 207 bar (3000 psi) Ductile iron bodies available; dimensions may differ.

TO ORDER

INPS10-36

Adjustment Option		Seals		Spring Range
1/4 in. Hex Allen Head	A	Buna N (Std.)	N	04 4.1 to 27.6 bar (60 to 400 psi)
1-1/2 in. Dia. Alum Knob Option	B	Fluorocarbon	V	15 16.5 to 103.4 bar (240 to 1500 psi)
A w/Cover Cap	C			30 31.7 to 206.7 bar (460 to 3000 psi)
Factory Preset Non-Adjst.	F*			
Factory Preset Hidden Adjustment Option C	H*			
w/Lockwire Holes	L			

Setting in psi
 (Blank)† for Adjustable, or Specify, for example:
 9.0 900 psi
 21.0 2100 psi

* If the valve is adjusted beyond the recommended maximum pressure range for the F and H style adjuster options, the valve may not open to relieve system pressure.

†Adjustable valves will be preset to approx. 50% of spring max. potential.

NOTE: Due to manufacturing tolerances, it may be possible to adjust the valve either lower or higher than the nominal