

**DESCRIPTION**

A solenoid-operated, 2-way, normally closed, poppet-type, screw-in hydraulic cartridge valve, with either "J" or "Y" type manual override standard. This valve is intended as a blocking or load holding device for low flow circuits having pull-only manual override requirements for handles or cable linkage.

**OPERATION**

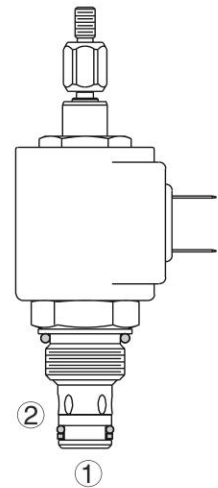
When de-energized, the SV08-20J/Y acts as a check valve, allowing flow from 1 to 2, while blocking flow from 2 to 1. When energized, the valve's poppet lifts to open the 2 to 1 flow path, while flow from 1 to 2 is severely restricted. Operation of Manual Override Option: To manually override, pull and hold the knurled knob. This override is not detented. The pull force required is approximately 24 lbs. The "J" option includes a male 10-32 thread for a cable attachment. If a cable is used, the internal valve spring may not provide enough force to overcome internal cable friction. An external means of returning the cable must be provided by the user.

**FEATURES**

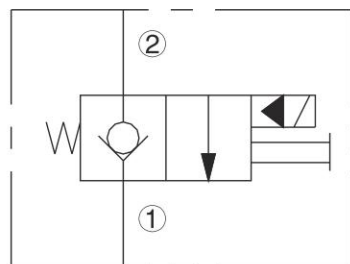
- Continuous-duty rated coil.
- Hardened parts for long life.
- Optional coil voltages and terminations.
- Optional waterproof E-Coils rated up to IP69K.
- Manual override standard.
- Industry common cavity.
- Compact size.

**RATINGS**

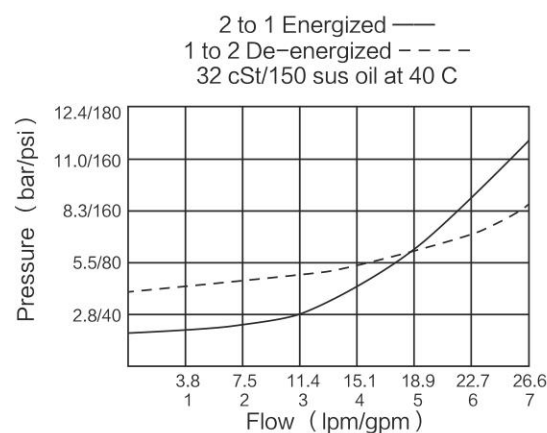
**Maximum Operating Pressure:** 207 bar (3000 psi)  
**Proof Pressure:** 255 bar (3700 psi)  
**Flow:** See Performance Chart  
**Temperature:** -40 to 120° C with standard Buna seals  
**Coil Duty Rating:** Continuous from 85% to 115% of nominal voltage  
**Initial Coil Current Draw at 20° C:** Standard Coil: 1.2 amps at 12 VDC;  
 0.13 amps at 115 VAC (full wave rectified);  
**E-Coil:** 1.4 amps at 12 VDC; 0.7 amps at 24 VDC  
**Minimum Pull-in Voltage:** 85% of nominal at 40° C; Drop Out 5%  
**Fluids:** Mineral-based or synthetics with lubricating properties at viscosities of 7.4 to 420 cSt (50 to 2000 sus)  
**Installation:** No restrictions  
**Cavity:** T08-2E; See bottom of this catalog.



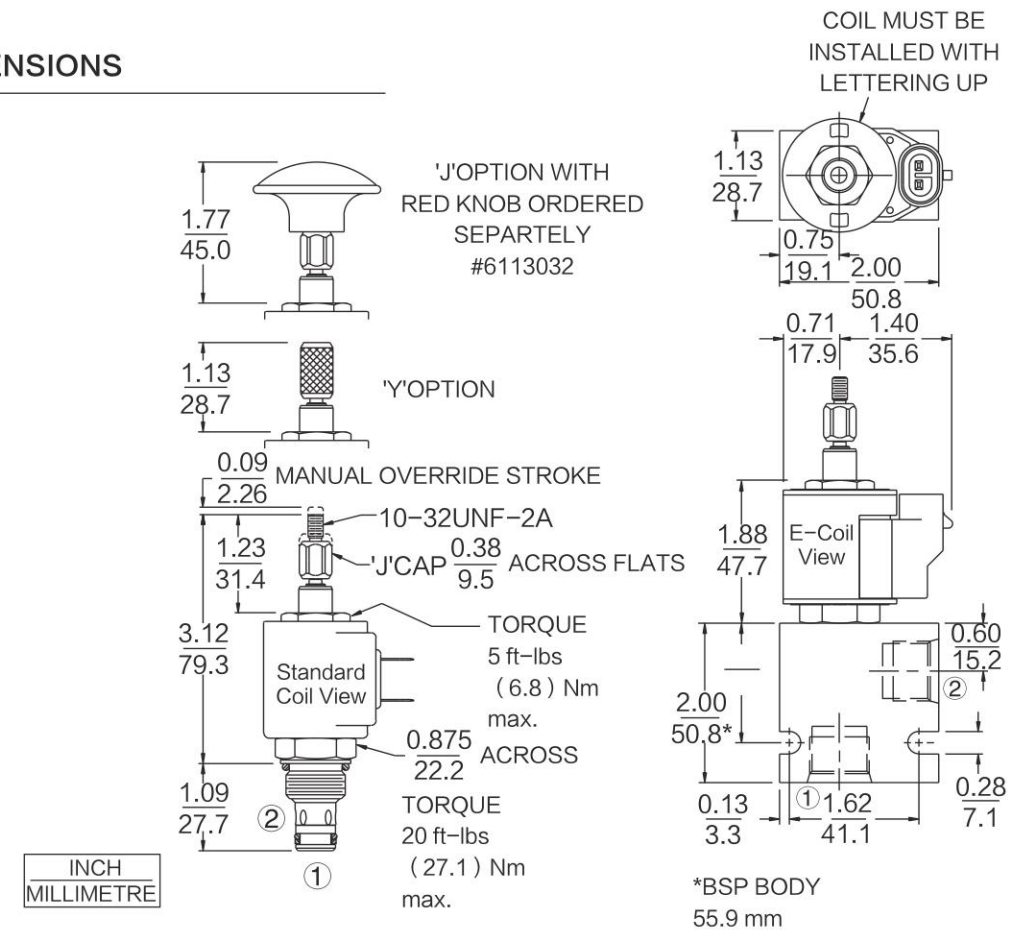
ISO SYMBOL



**PERFORMANCE (Cartridge Only)**



**DIMENSIONS**



**MATERIALS**

**Cartridge:** Weight: 0.15 kg. (0.33 lbs.); Steel with hardened work surfaces. Zinc-plated exposed surfaces; Buna N O-rings and back-ups standard.

**Standard Ported Body:** Weight: 0.16 kg. (0.35 lbs.); Anodized high strength 6061 T6 aluminum alloy, rated to 207 bar (3000 psi); Ductile iron bodies available; dimensions may differ.

**Standard Coil:** Weight: 0.11 kg. (0.25 lbs.); Unitized thermoplastic encapsulated, Class H high temperature magnet wire.

**E-Coil:** Weight: 0.14 kg. (0.3 lbs.); Fully encapsulated with rugged external metal shell. Rated up to IP69K with integral connectors.

**TO ORDER**

