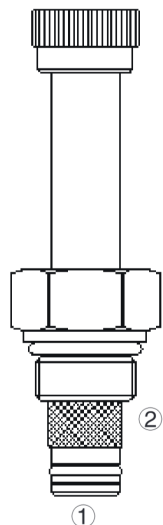


INSV08-B20 Popet, 2-Way, Normally Closed



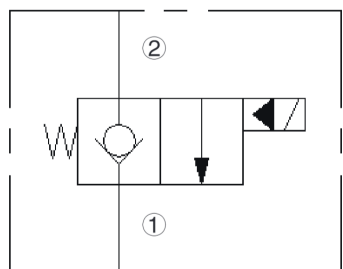
DESCRIPTION

A solenoid-operated, 2-way, normally closed, piloted poppet-type, screw-in hydraulic cartridge valve, intended to act as a blocking or load-holding device for low flow circuits.

OPERATION

When de-energized, the INSV08-B20 acts as a check valve, allowing flow from 1 to 2, while blocking flow from 2 to 1. When energized, the cartridge's poppet lifts to open the 2 to 1 flow path. In this mode, flow from 1 to 2 is severely restricted. If this path is required, see model INSV08-22.

ISO SYMBOL



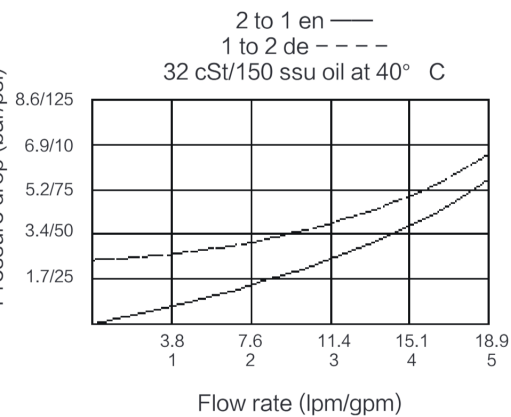
FEATURES

- Continuous-duty rated coil.
- Hardened seat for long life and low leakage.
- Optional coil voltages and terminations.
- Cartridges are voltage interchangeable.
- Unitized, molded coil design.
- Manual override option.
- Optional waterproof E-Coils rated up to IP69K.
- Industry common cavity.
- Compact size.

RATINGS

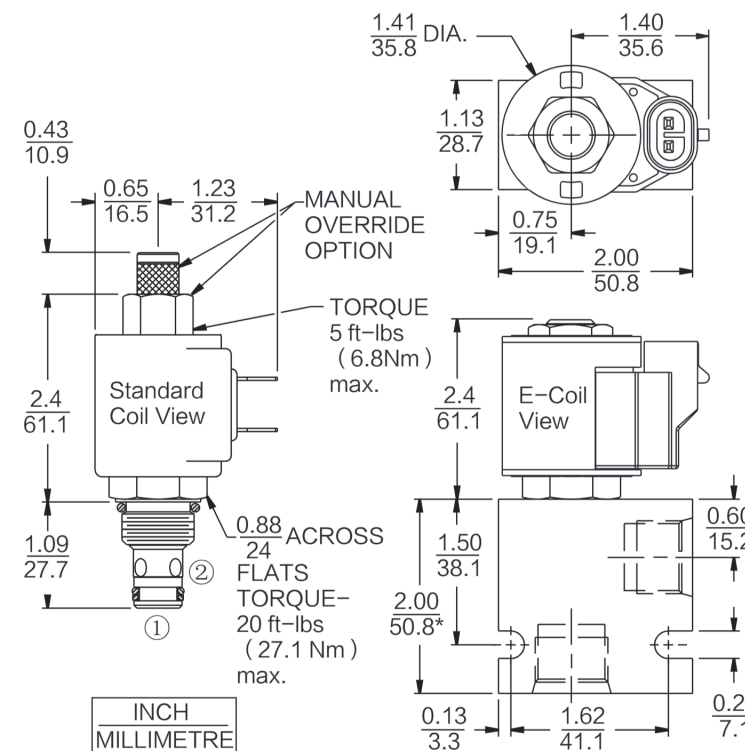
Operating Pressure: 207 bar (3000 psi)
Proof Pressure: 255 bar (3700 psi)
Flow: See Performance Chart
Internal Leakage: 0.15 cc/minute (3 drops/minute) max. at 207 bar (3000 psi)
Temperature: -40 to 120° C with standard Buna seals
Coil Duty Rating: Continuous from 85% to 115% of nominal voltage
Response Time: First indication of change of state with 100% voltage supplied at 80% of nominal flow rating: Energized: 40 msec. De-energized: 46 msec.
Initial Coil Current Draw at 20° C: **Standard Coil:** 1.2 amps at 12 VDC; 0.13 amps at 115 VAC (full wave rectified).
E-Coil: 1.4 amps at 12 VDC; 0.7 amps at 24 VDC
Minimum Pull-in Voltage: 85% of nominal at 207 bar (3000 psi)
Fluids: Mineral-based or synthetics with lubricating properties at viscosities of 7.4 to 420 cSt (50 to 2000 sus)
Installation: No restrictions
Cavity: T08-2E; See page 297.

PERFORMANCE (Cartridge Only)



INSV08-B20

DIMENSIONS



* BSP BODY - 55.9mm

MATERIALS

Cartridge: Weight: 0.09 kg. (0.20 lbs.); Steel with hardened work surfaces. Zinc-plated exposed surfaces; Buna N O-rings and back-ups standard.
Standard Ported Body: Weight: 0.16 kg. (0.35 lbs.); Anodized high-strength 6061 T6 aluminum alloy, rated to 207 bar (3000 psi); Ductile iron bodies available; dimensions may differ.
Standard Coil: Weight: 0.11 kg. (0.25 lbs.); Unitized thermoplastic encapsulated, Class H high temperature magnetwire.
E-Coil: Weight: 0.14 kg. (0.3 lbs.); Perfect wound, fully encapsulated with rugged external metal shell; Rated up to IP69K with integral connectors.

TO ORDER

INSV08-B20

Options

None (Blank) —
 150 μ Screen S
 Manual Override M

Porting

Cartridge Only 0
 SAE 4 4T
 SAE 6 6T
 1/4 in. BSP* 2B
 3/8 in. BSP* 3B

*BSP Body; U.K. Mfr. Only

Seals

Buna N (Std.) N
 Fluorocarbon V

Voltage Std. Coil

0 Less Coil**
 10 10 VDC†
 12 12 VDC
 24 24 VDC
 36 36 VDC
 48 48 VDC
 24 24 VAC
 115 115 VAC
 230 230 VAC

**Includes Std. Coil Nut
 †DS, DW or DL terminations only.

E-Coil

10 10 VDC
 12 12 VDC
 20 20 VDC
 24 24 VDC

Termination (VDC) Std. Coil

DS Dual Spades
 DG DIN 43650
 DL Leadwires (2)
 DL/W Leads w/ Weatherpak® Connectors
 DR Deutsch DT04-2P

Termination (VAC) Std. Coil

AG DIN 43650
 AP 1/2 in. Conduit

Termination (VDC) E-Coil

ER Deutsch DT04-2P (IP69K Rated)
 EL Leadwires (2)
 EY Metri-Pack® 150 (IP69K Rated)

Coils with internal diode are available. Consult