

DESCRIPTION

A solenoid-operated, 2-way, normally closed, poppet-type, screw-in hydraulic cartridge valve, with either "J" or "Y" type manual override standard. This valve is intended as a blocking or load holding device for low flow circuits having pull-only manual override requirements for handles or cable linkage.

OPERATION

When de-energized, the INSV38-20J acts as a check valve, allowing flow from 1 to 2, while blocking flow from 2 to 1. When energized, the valve's poppet lifts to open the 2 to 1 flow path, while flow from 1 to 2 is severely restricted.

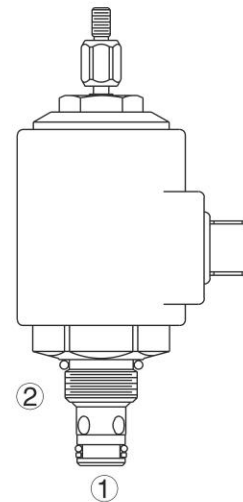
Operation of Manual Override Option: To manually override, pull and hold the knurled knob. This override is not detented. The pull force required is approximately 20 lbs. The "J" option includes a male 10-32 thread for a cable attachment. If a cable is used, the internal valve spring may not provide enough force to overcome internal cable friction. An external means of returning the cable must be provided by the user.

FEATURES

- Continuous-duty rated coil.
- Hardened seat for long life and low leakage.
- Optional coil voltages and terminations.
- Cartridges are voltage interchangeable.
- Unitized, molded coil design.
- Manual override option.
- Optional waterproof E-Coils rated up to IP69K.
- Industry common cavity.
- Compact size.

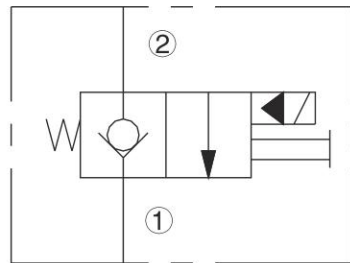
RATINGS

Operating Pressure: 207 bar (3000 psi)
Flow: see performance chart
Internal Leakage: 0.15 cc/minute (3 drops/minute) max. at 207 bar (3000 psi)
Coil Duty Rating: Continuous from 85% to 115% of nominal voltage
Response Time: First indication of change of state with 100% voltage supplied at 80% of nominal flow rating: Energized: 40 msec.; De-energized: 32 msec.
 Response Time with Sensor: 53 ms pull-in, 110 ms drop-out
Initial Coil Current Draw at 20°C : Standard Coil: 1.67 amps at 12 VDC; 0.18 amps at 115 VAC (full wave rectified).
E-Coil: 1.7 amps at 12 VDC; 0.85 amps at 24 VDC
Minimum Pull-in Voltage: 85% of nominal at 207 bar (3000 psi)
Fluids: Mineral-based or synthetics with lubricating properties at viscosities of 7.4 to 420 cSt (50 to 2000 sus);
Installation: No restrictions;
Cavity: T08-2E; See bottom of this catalog.

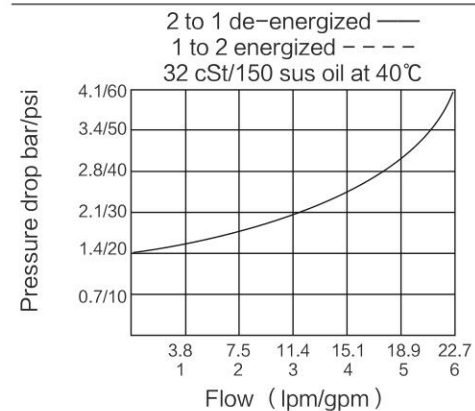


ISO SYMBOL

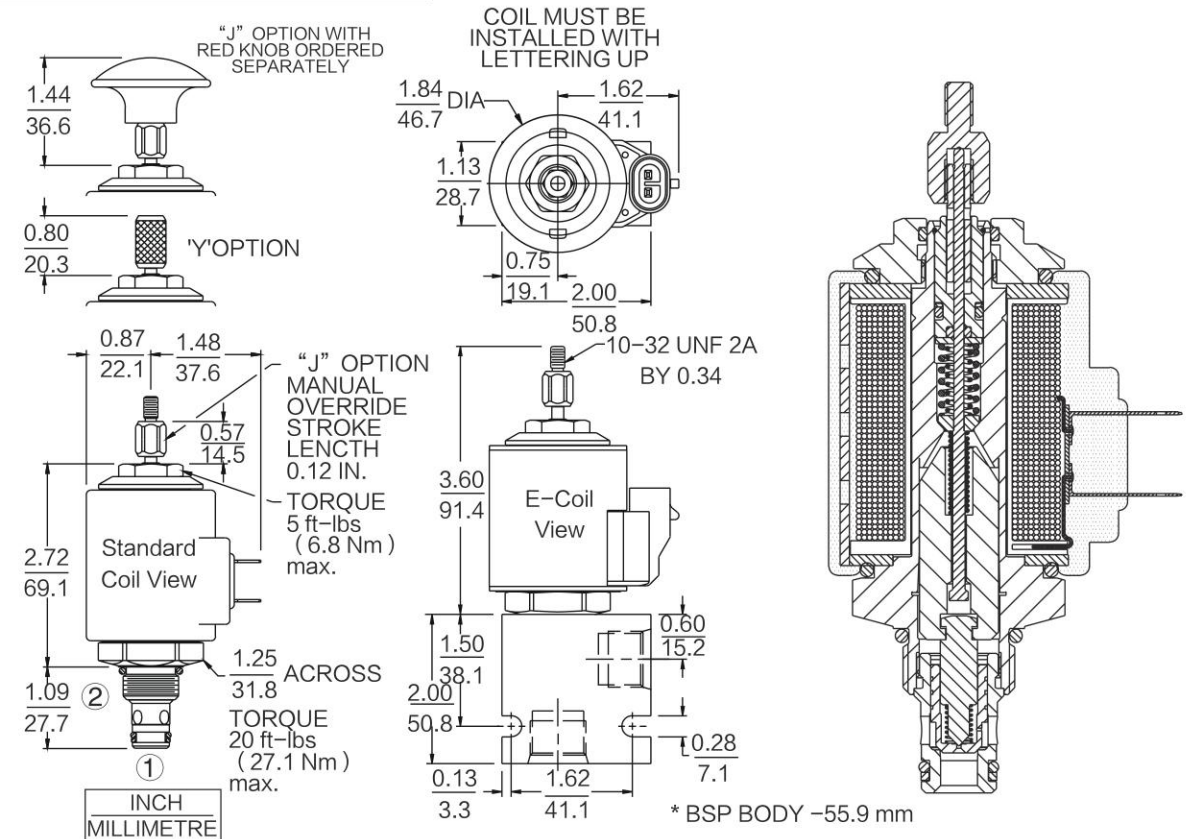
ISO:



PERFORMANCE (Cartridge Only)



DIMENSIONS



MATERIALS

Cartridge: Weight: 0.09 kg. (0.20 lbs.); Steel with hardened work surfaces. Zinc-plated exposed surfaces; Buna N O-rings and back-ups standard.
Standard Ported Body: Weight: 0.16 kg. (0.35 lbs.); Anodized high-strength 6061 T6 aluminum alloy, rated to 207 bar (3000 psi); Ductile iron bodies available; dimensions may differ.
Standard Coil: Weight: 0.27 kg. (0.60 lbs.); Unitized thermoplastic encapsulated, Class H high temperature magnetwire.
E-Coil: Weight: 0.41 kg. (0.9 lbs.); Perfect wound, fully encapsulated with rugged external metal shell; Rated up to IP69K with integral connectors.

TO ORDER

