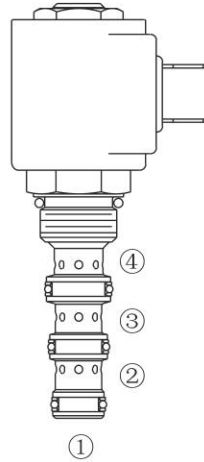
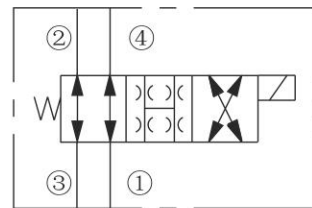


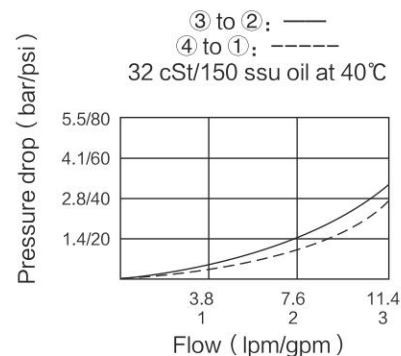
INSV08-40 Spool, 3-Way



ISO SYMBOL



PERFORMANCE (Cartridge Only)



DESCRIPTION

A solenoid-operated, 4-way, 2-position, direct-acting spool-type, screw-in hydraulic cartridge valve.

OPERATION

When de-energized, INSV08-40 flow paths are ③ to ②, and ④ to ①. When energized, the valve's spool shifts to open ③ to ④, and ② to ①. All ports are open at cross-over.

Operation of Manual Override Option:

To override, push button in and twist counterclockwise 180°.

The internal spring will push the button out. In this position, the valve may be only partially shifted. To assure full override shift, pull the button out to its fullest extension and hold it in this position.

To return to normal valve function, push button in, twist clockwise 180°, and release. Override will be detented in this position.

FEATURES

- Continuous-duty rated solenoid.
- Hardened precision spool and cage for long life.
- Optional coil voltages and terminations.
- Efficient wet-armature construction.
- All ports may be fully pressurized.
- Cartridges are voltage interchangeable.
- Manual Override Options.
- Optional waterproof E-Coils rated up to IP69K.
- Unitized, molded coil design.
- Compact size.

RATINGS

Operating Pressure: 207 bar (3000 psi)

Flow: See Performance Chart

Internal Leakage:

82 cc/minute (5 cu. in./minute) max. at 207 bar (3000 psi)

Temperature: -40°C to 120°C, with Buna N seals

Coil Duty Rating:

Continuous from 85% to 115% of nominal voltage

Initial Coil Current Draw at 20°C :

Standard Coil: 1.2 A at 12 VDC

0.13 A at 115 VAC (full wave rectified);

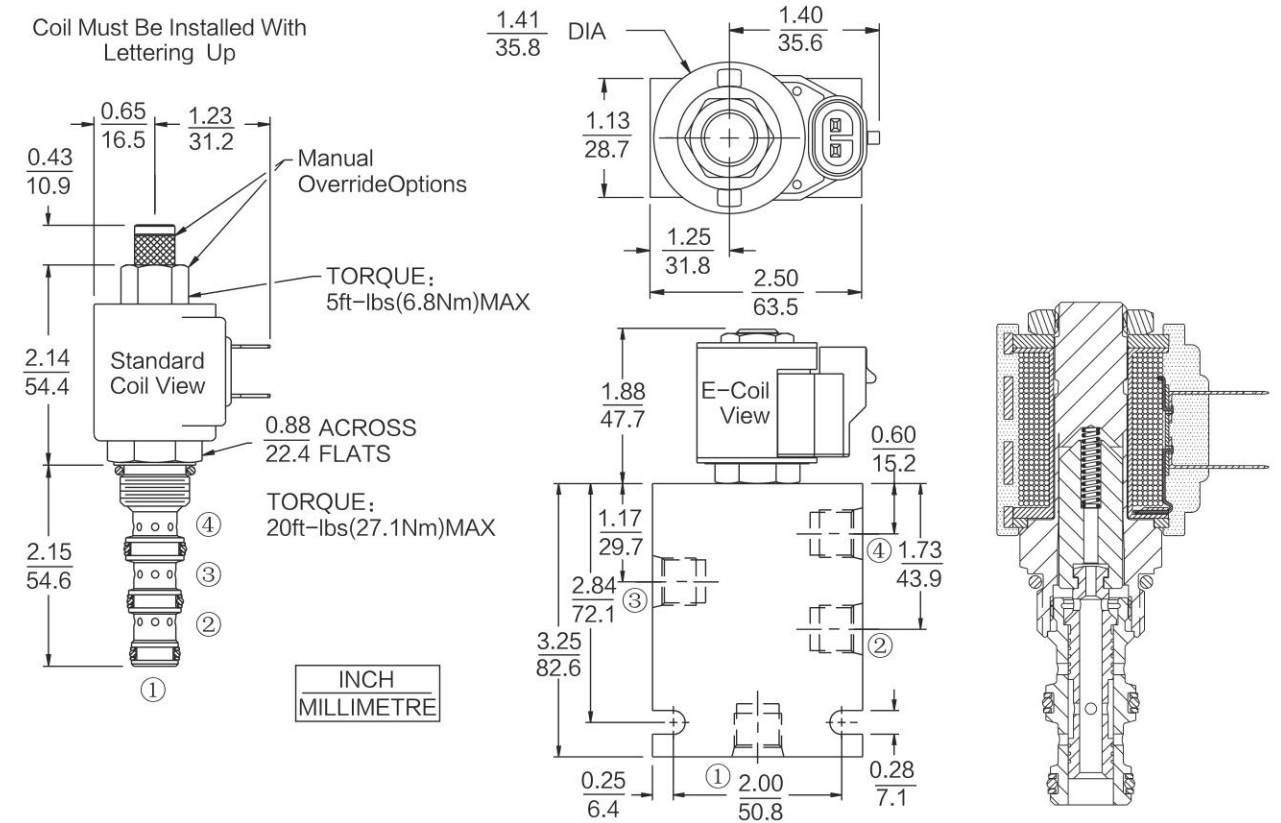
E-Coil: 1.4 A at 12 VDC; 0.7 A at 24 VDC

Minimum Pull-in Voltage: 85% of nominal at 207 bar (3000 psi)

Fluids: Mineral-based or synthetics with lubricating properties at viscosities of 7.4 to 420 cSt (50 to 2000 ssu)

Cavity: T08-4A; See bottom of this catalog.

DIMENSIONS



MATERIALS

Cartridge: Weight: 0.13kg (0.28lbs); INSV08-40

Steel with hardened work surfaces.
Zinc-plated exposed surfaces;
Buna N O-rings and back-ups standard.

Standard Ported Body: Weight:

0.27kg (0.60lbs); Anodized high strength 6061 T6 aluminum alloy, rated to 240 bar (3500 psi); Ductile iron bodies available; dimensions may differ.

Standard Coil: Weight:

0.11kg (0.25lbs); Unitized thermoplastic encapsulated, Class H high temperature magnet wire.

E-Coil: Weight: 0.14kg (0.3lbs); Fully encapsulated with rugged external metal shell. Rated up to IP69K with integral connectors.

TO ORDER

Options	Voltage Std. Coil	Termination (VDC) Std. Coil
None (Blank)	0 Less Coil**	DS Dual Spades
Manual Override M	10 10 VDC†	DG DIN 43650
	12 12 VDC	DL Leadwires (2)
	24 24 VDC	DLW Leads w/ Weatherpak® Connectors
	36 36 VDC	DR Deutsch DT04-2P
	48 48 VDC	
	24 24 VAC	Termination (VAC) Std. Coil
	115 115 VAC	AG DIN 43650
	230 230 VAC	AP 1/2 in. Conduit
		Termination (VDC) E-Coil
		ER Deutsch DT04-2P (IP69K Rated)
		EL Leadwires (2)
		EY Metri-Pack® 150 (IP69K Rated)

Coils with internal diode are