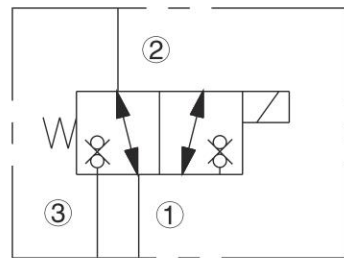
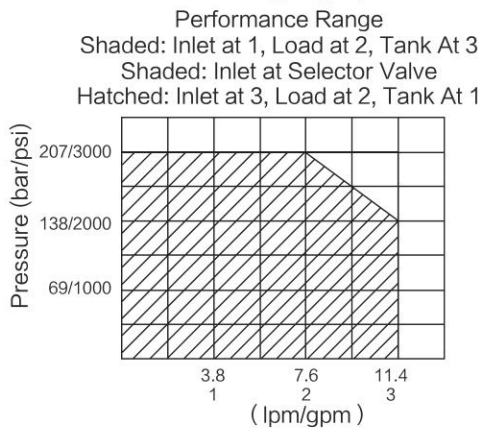
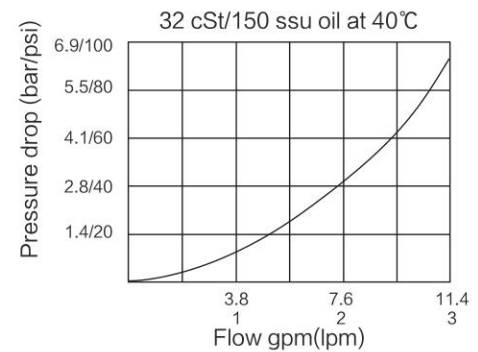


ISO SYMBOL



PERFORMANCE (Cartridge Only)



DESCRIPTION

A solenoid-operated, two-position, three-way, bi-directional blocking, screw-in hydraulic cartridge valve. It is designed for low leakage in load-holding applications.

OPERATION

When de-energized, the INSV38-38 blocks ow from 3 to 2 or from 2 to 3. When energized, ow is blocked from 2 to 1 or from 1 to 2.

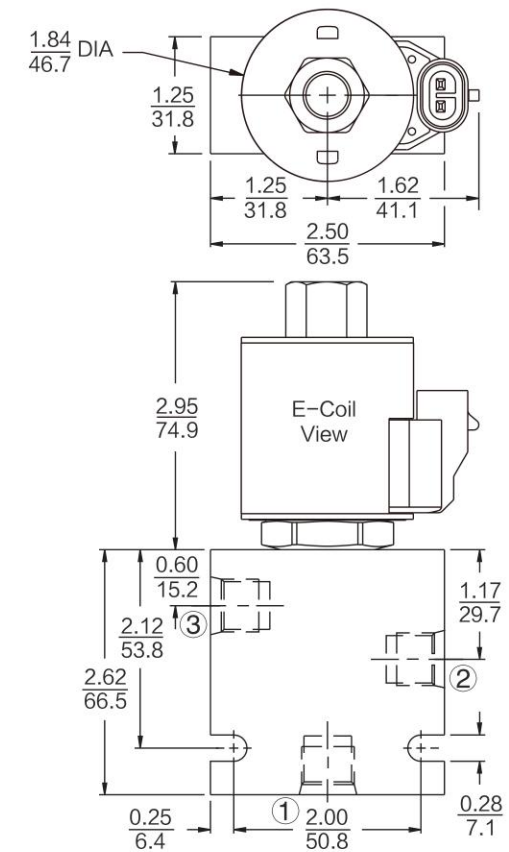
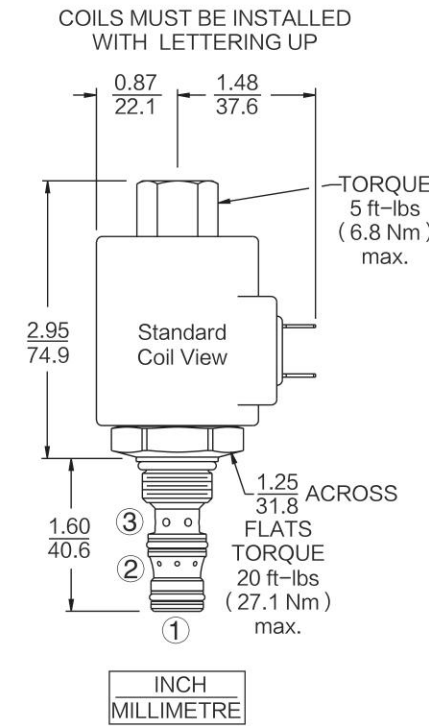
FEATURES

- Continuous-duty rated solenoid.
- Hardened seat for long life and low leakage.
- Optional coil voltages and terminations.
- Efficient wet-armature construction.
- Cartridges are voltage interchangeable.
- Optional waterproof E-Coils rated up to IP69K.
- Unitized, molded coil design.
- Industry-common cavity.

RATINGS

Operating Pressure: 207 bar (3000 psi)
Flow: See Performance Chart
Internal Leakage: 0.25 cc/minute (5 drops/minute) at 207 bar (3000 psi)
Temperature: -40 to 100°C with standard Buna seals; -26 to 204°C with Fluorocarbon seals; -54 to 107°C with Polyurethane seals;
Coil Duty Rating: Continuous from 85% to 115% of nominal voltage
 Initial Coil Current Draw at 20°C Standard Coil: 1.67 amps at 12VDC ;0.18 amps at 115 VAC (full wave rectied).
E-Coil: 1.7 amps at 12 VDC; 0.85 amps at 24 VDC
 Minimum Pull-in Voltage: 85% of nominal at 207 bar (3000 psi)
Fluids: Mineral-based or synthetics with lubricating properties at viscosities of 7.4 to 420 cSt (50 to 2000 sus);
Cavity: T08-3A; See bottom of this catalog.

DIMENSIONS



MATERIALS

Cartridge: Weight: 0.13 kg. (0.28 lbs.); Steel with hardened work surfaces. Zinc-plated exposed surfaces. Buna N O-rings and polyester elastomer back-up standard.
Standard Ported Body: Weight: 0.27 kg. (0.60 lbs.); Anodized high-strength 6061 T6 aluminum alloy, rated to 207 bar (3000psi). Ductile iron bodies available; dimensions may differ.
Standard Coil: Weight: 0.27 kg. (0.60 lbs.); Unitized thermoplastic encapsulated, Class H high temperature magnetwire.
E-Coil: Weight: 0.41 kg. (0.9 lbs.); Fully encapsulated with rugged external metal shell. Rated up to IP69K with integral connectors.

TO ORDER

INSV38-38	Option	Porting	Seals	Voltage Std. Coil	Termination (VDC) Std. Coil
	None (Blank)	Cartridge Only 0 SAE 6 6T 1/4 in. BSP* 2B	Buna N (Std.) N Fluorocarbon V Polyurethane P	0 Less Coil** 10 10 VDC† 12 12 VDC 24 24 VDC 36 36 VDC 48 48 VDC 24 24 VAC 115 115 VAC 230 230 VAC	DS Dual Spades DG DIN 43650 DL Leadwires (2) DL/W Leads w/Weatherpak® Connectors DR Deutsch DT04-2P Termination (VAC) Std. Coil AG DIN 43650 AP 1/2 in. Conduit Termination (VDC) E-Coil EG Deutsch DT04-2P (IP69K Rated) EY Metri-Pack® 150 (IP69K Rated)
				**Includes Std. Coil Nut †DS, DW or DL terminations only.	Coils with internal diode are available. Consult factory.