

DESCRIPTION

A solenoid-operated, four-way, two-position, direct-acting, spool-type, screw-in hydraulic cartridge valve.

OPERATION

When de-energized, INSV10-40 allows flow from ③ to ②, as well as from ④ to ①. When energized, the cartridge's spool shifts to open ③ to ④, and ② to ①.

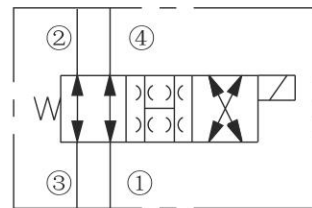
FEATURES

- Continuous-duty rated solenoid.
- Hardened precision spool and cage for long life.
- Optional coil voltages and terminations.
- Efficient wet-armature construction.
- All ports may be fully pressurized.
- Cartridges are voltage interchangeable.
- Manual Override Options.
- Optional waterproof E-Coils rated up to IP69K.
- Unitized, molded coil design.
- Industry common cavity.

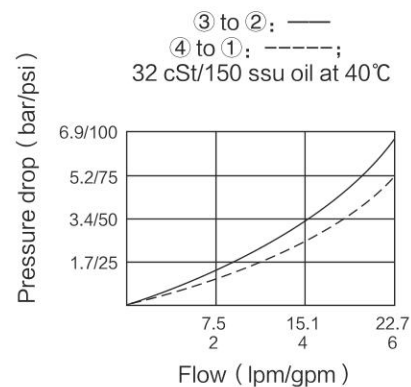
RATINGS

Operating Pressure: 207 bar (3000 psi)
Proof Pressure: 350 bar (5075 psi)
Flow: MAX 23 lpm (6 gpm)
Internal Leakage: 82 cc/minute (5 cu. in./minute) max. at 207 bar (3000 psi)
Temperature: -40°C to 120°C, with Buna N seals
Coil Duty Rating: Continuous from 85% to 115% of nominal voltage
Initial Coil Current Draw at 20°C :
Standard Coil: Standard Coil: 1.67 amps at 12 VDC; 0.18 amps at 115 VAC (full wave rectified).
E-Coil: 1.7 amps at 12 VDC; 0.85 amps at 24 VDC
Minimum Pull-in Voltage: 85% of nominal at 207 bar (3000 psi)
Fluids: Mineral-based or synthetics with lubricating properties at viscosities of 7.4 to 420 cSt (50 to 2000 ssu)
Cavity: T10-4A; See bottom of this catalog.

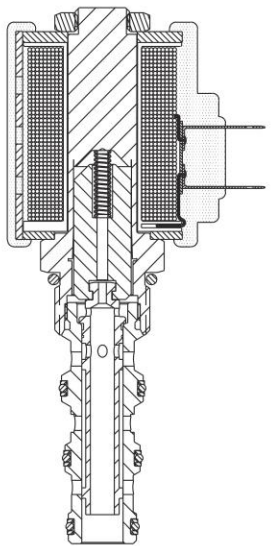
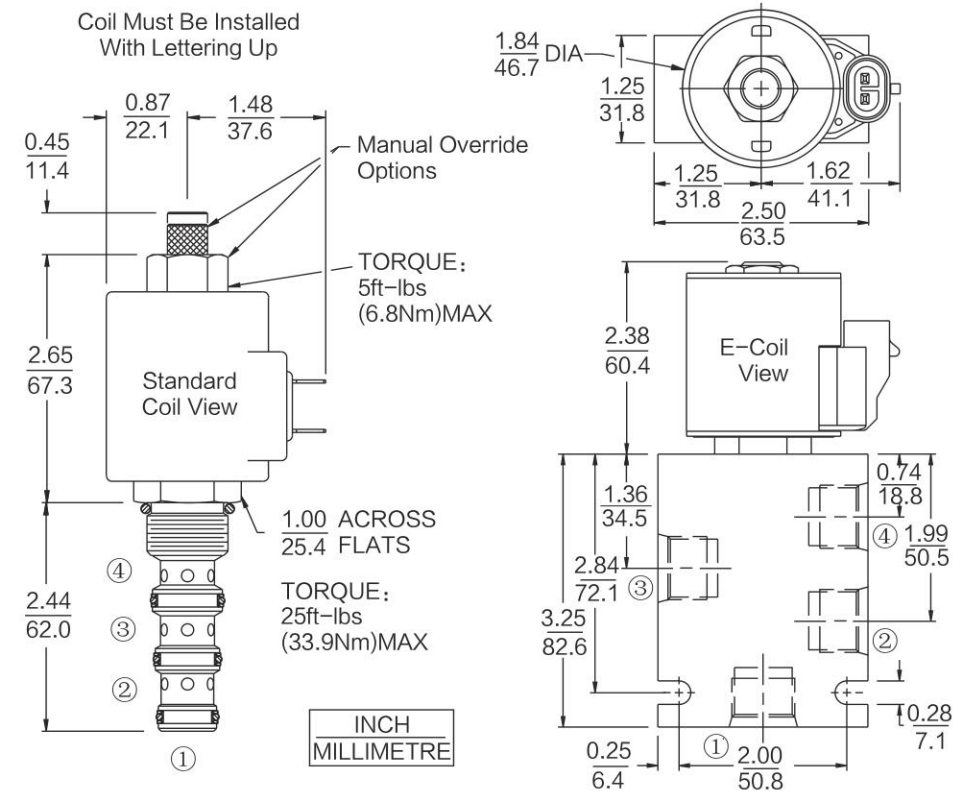
ISO SYMBOL



PERFORMANCE (Cartridge Only)



DIMENSIONS



MATERIALS

Cartridge Weight: 0.20kg (0.45lbs)
 Steel with hardened work surfaces. Zinc-plated exposed surfaces; Buna N O-rings and back-ups standard.

Standard Ported Body Weight: 0.36kg (0.80lbs) ; Anodized highstrength 6061 T6 aluminum alloy, rated to 240 bar (3500 psi); Ductile iron bodies available; dimensions may differ.

Standard Coil Weight: 0.27kg (0.60lbs) ; Unitized thermoplastic encapsulated, Class H high temperature magnet wire.

E-Coil Weight: 0.41kg (0.9lbs) ; Fully encapsulated with rugged external metal shell. Rated up to IP69K with integral connectors.

TO ORDER

Options		Voltage Std. Coil		Termination (VDC) Std. Coil	
None (Blank)	-	0	Less Coil**	DS	Dual Spades
Manual Override M	-	10	10 VDC†	DG	DIN 43650
Manual Override Y	-	12	12 VDC	DL	Leadwires (2)
Manual Override J	-	24	24 VDC	DL/W	Leads w/ Weatherpak® Connectors
	-	36	36 VDC	DR	Deutsch DT04-2P
	-	48	48 VDC		
	-	24	24 VAC		
	-	115	115 VAC		
	-	230	230 VAC		
	-	**Includes Std. Coil Nut †DS, DW or DL terminations only.			
Porting		Termination (VAC) Std. Coil		Termination (VDC) E-Coil	
Cartridge Only	0	AG	DIN 43650	ER	Deutsch DT04-2P (IP69K Rated)
SAE 6	6T	AP	1/2 in. Conduit	EL	Leadwires (2)
SAE 8	8T			EY	Metri-Pack® 150 (IP69K Rated)
1/4 in. BSP*	2B				
3/8 in. BSP*	3B				
Seals		E-Coil			
Buna N (Std.)	N	10	10 VDC		
Fluorocarbon	V	12	12 VDC		
		20	20 VDC		
		24	24 VDC		